



**CALL NO. 407**

**CONTRACT ID. 172918**

**NICHOLAS - CARTER - ELLIOTT - FLEMING COUNTIES**

**FED/STATE PROJECT NUMBER 121GR17M072 - FE02**

**DESCRIPTION DISTRICT 9 BRIDGE OVERLAYS.**

**WORK TYPE BRIDGE DECK RESTORATION & WATERPROOFING**

**PRIMARY COMPLETION DATE 11/15/2018**

**LETTING DATE: December 08,2017**

Sealed Bids will be received electronically through the Bid Express bidding service until 10:00 AM EASTERN STANDARD TIME December 08,2017. Bids will be publicly announced at 10:00 AM EASTERN STANDARD TIME.

**NO PLANS ASSOCIATED WITH THIS PROJECT.**

**REQUIRED BID PROPOSAL GUARANTY:** Not less than 5% of the total bid.

## TABLE OF CONTENTS

PART I	SCOPE OF WORK
	<ul style="list-style-type: none"><li>• PROJECT(S), COMPLETION DATE(S), &amp; LIQUIDATED DAMAGES</li><li>• CONTRACT NOTES</li><li>• STATE CONTRACT NOTES</li><li>• SPECIAL NOTE(S) APPLICABLE TO PROJECT</li><li>• LIQUIDATED DAMAGES</li><li>• TRAFFIC CONTROL PLAN</li><li>• SKETCH MAP(S)</li><li>• MATERIAL SUMMARY</li><li>• BRIDGE DRAWINGS</li></ul>
PART II	SPECIFICATIONS AND STANDARD DRAWINGS
	<ul style="list-style-type: none"><li>• SPECIFICATIONS REFERENCE</li><li>• SUPPLEMENTAL SPECIFICATION</li><li>• STANDARD DRAWINGS THAT APPLY</li></ul>
PART III	EMPLOYMENT, WAGE AND RECORD REQUIREMENTS
	<ul style="list-style-type: none"><li>• LABOR AND WAGE REQUIREMENTS</li><li>• EXECUTIVE BRANCH CODE OF ETHICS</li><li>• KENTUCKY EQUAL EMPLOYMENT OPPORTUNITY ACT OF 1978 LOCALITY / STATE</li><li>• PROJECT WAGE RATES / STATE</li></ul>
PART IV	INSURANCE
PART V	BID ITEMS

**PART I**  
**SCOPE OF WORK**

## ADMINISTRATIVE DISTRICT - 09

**CONTRACT ID - 172918**

**121GR17M072 - FE02**

**COUNTY - CARTER**

**PCN - MB02200601701**  
**FE02 022 0060 B00063N**

US 60 (MP 24.505). BRIDGE OVER LITTLE SANDY RIVER.BRIDGE DECK RESTORATION & WATERPROOFING  
GEOGRAPHIC COORDINATES LATITUDE 38:19:49.00 LONGITUDE 82:56:08.00

**PCN - MB02216611701**  
**FE02 022 1661 B00017N**

KY 1661 (MP 1.559). BRIDGE OVER LITTLE SANDY RIVER.BRIDGE DECK RESTORATION & WATERPROOFING  
GEOGRAPHIC COORDINATES LATITUDE 38:17:10.00 LONGITUDE 82:58:39.00

**COUNTY - ELLIOTT**

**PCN - MB03200071701**  
**FE02 032 0007 B00006N**

KY 7 (MP 7.153). BRIDGE OVER LITTLE SANDY RIVERBRIDGE DECK RESTORATION & WATERPROOFING  
GEOGRAPHIC COORDINATES LATITUDE 38:05:15.00 LONGITUDE 83:07:28.00

**PCN - MB03200071702**  
**FE02 032 0007 B00007N**

KY 7 (MP 4.147). BRIDGE OVER DOCTORS BRANCH.BRIDGE DECK RESTORATION & WATERPROOFING  
GEOGRAPHIC COORDINATES LATITUDE 38:04:04.00 LONGITUDE 83:09:58.00

**COUNTY - FLEMING**

**PCN - MB03510131701**  
**FE02 035 1013 B00063N**

KY 1013 (MP 9.613). BRIDGE OVER FOX CREEK.BRIDGE DECK RESTORATION & WATERPROOFING  
GEOGRAPHIC COORDINATES LATITUDE 38:20:42.00 LONGITUDE 83:32:00.00

**COUNTY - NICHOLAS**

**PCN - MB09100571701**  
**FE02 091 0057 B00045N**

KY 57 (MP 1.174). BRIDGE OVER SOMERSET CREEK.BRIDGE DECK RESTORATION & WATERPROOFING  
GEOGRAPHIC COORDINATES LATITUDE 38:13:54.00 LONGITUDE 84:00:20.00

**COUNTY - ROWAN**

**PCN - MB10303771701**  
**FE02 103 0377 B00023N**

KY 377 (MP 0.58). BRIDGE OVER BRUSHY CREEK.BRIDGE DECK RESTORATION & WATERPROOFING  
GEOGRAPHIC COORDINATES LATITUDE 38:12:42.00 LONGITUDE 83:28:13.00

### COMPLETION DATE(S):

COMPLETED BY 11/15/2018	APPLIES TO ENTIRE CONTRACT
30 CALENDAR Days	APPLIES TO 022B00017N
30 CALENDAR Days	APPLIES TO 022B00063N
30 CALENDAR Days	APPLIES TO 032B00006N
30 CALENDAR Days	APPLIES TO 032B00007N
30 CALENDAR Days	APPLIES TO 035B00063N
30 CALENDAR Days	APPLIES TO 091B00045N
30 CALENDAR Days	APPLIES TO 103B00023N

## **CONTRACT NOTES**

### **PROPOSAL ADDENDA**

All addenda to this proposal must be applied when calculating bid and certified in the bid packet submitted to the Kentucky Department of Highways. Failure to use the correct and most recent addenda may result in the bid being rejected.

### **BID SUBMITTAL**

Bidder must use the Department's Expedite Bidding Program available on the Internet web site of the Department of Highways, Division of Construction Procurement. ([www.transportation.ky.gov/construction-procurement](http://www.transportation.ky.gov/construction-procurement))

The Bidder must download the bid file located on the Bid Express website ([www.bidx.com](http://www.bidx.com)) to prepare a bid packet for submission to the Department. The bidder must submit electronically using Bid Express.

### **JOINT VENTURE BIDDING**

Joint venture bidding is permissible. All companies in the joint venture must be prequalified in one of the work types in the Qualifications for Bidders for the project. The bidders must get a vendor ID for the joint venture from the Division of Construction Procurement and register the joint venture as a bidder on the project. Also, the joint venture must obtain a digital ID from Bid Express to submit a bid. A joint bid bond of 5% may be submitted for both companies or each company may submit a separate bond of 5%.

### **UNDERGROUND FACILITY DAMAGE PROTECTION**

The contractor shall make every effort to protect underground facilities from damage as prescribed in the Underground Facility Damage Protection Act of 1994, Kentucky Revised Statute KRS 367.4901 to 367.4917. It is the contractor's responsibility to determine and take steps necessary to be in compliance with federal and state damage prevention directives. When prescribed in said directives, the contractor shall submit Excavation Locate Requests to the Kentucky Contact Center (KY811) via web ticket entry. The submission of this request does not relieve the contractor from the responsibility of contacting non-member facility owners, whom shall be contacted through their individual Protection Notification Center. Non-compliance with these directives can result in the enforcement of penalties.

### **SPECIAL NOTE FOR COMPOSITE OFFSET BLOCKS**

Contrary to the Standard Drawings (2016 edition) the Cabinet will allow 6" composite offset blocks in lieu of wooden offset blocks, except as specified on proprietary end treatments and crash cushions. The composite blocks shall be selected from the Cabinet's List of Approved Materials.

### **REGISTRATION WITH THE SECRETARY OF STATE BY A FOREIGN ENTITY**

Pursuant to KRS 176.085(1)(b), an agency, department, office, or political subdivision of the Commonwealth of Kentucky shall not award a state contract to a person that is a foreign entity required by [KRS 14A.9-010](#) to obtain a certificate of authority to transact business in the Commonwealth (“certificate”) from the Secretary of State under [KRS 14A.9-030](#) unless the person produces the certificate within fourteen (14) days of the bid or proposal opening. If the foreign entity is not required to obtain a certificate as provided in [KRS 14A.9-010](#), the foreign entity should identify the applicable exception. Foreign entity is defined within [KRS 14A.1-070](#).

**For all foreign entities required to obtain a certificate of authority to transact business in the Commonwealth, if a copy of the certificate is not received by the contracting agency within the time frame identified above, the foreign entity’s solicitation response shall be deemed non-responsive or the awarded contract shall be cancelled.**

Businesses can register with the Secretary of State at <https://secure.kentucky.gov/sos/ftbr/welcome.aspx>.

### **SPECIAL NOTE FOR PROJECT QUESTIONS DURING ADVERTISEMENT**

Questions about projects during the advertisement should be submitted in writing to the Division of Construction Procurement. This may be done by fax (502) 564-7299 or email to [kytc.projectquestions@ky.gov](mailto:kytc.projectquestions@ky.gov). The Department will attempt to answer all submitted questions. The Department reserves the right not to answer if the question is not pertinent or does not aid in clarifying the project intent.

The deadline for posting answers will be 3:00 pm Eastern Daylight Time, the day preceding the Letting. Questions may be submitted until this deadline with the understanding that the later a question is submitted, the less likely an answer will be able to be provided.

The questions and answers will be posted for each Letting under the heading “Questions & Answers” on the Construction Procurement website ([www.transportation.ky.gov/contract](http://www.transportation.ky.gov/contract)). The answers provided shall be considered part of this Special Note and, in case of a discrepancy, will govern over all other bidding documents.

### **HARDWOOD REMOVAL RESTRICTIONS**

The US Department of Agriculture has imposed a quarantine in Kentucky and several surrounding states, to prevent the spread of an invasive insect, the emerald ash borer. Hardwood cut in conjunction with the project may not be removed from the state. Chipping or burning on site is the preferred method of disposal.

### **INSTRUCTIONS FOR EXCESS MATERIAL SITES AND BORROW SITES**

Identification of excess material sites and borrow sites shall be the responsibility of the Contractor. The Contractor shall be responsible for compliance with all applicable state and federal laws and may wish to consult with the US Fish and Wildlife Service to seek protection under Section 10 of the Endangered Species Act for these activities.

### **ACCESS TO RECORDS**

The contractor, as defined in KRS 45A.030 (9) agrees that the contracting agency, the Finance and Administration Cabinet, the Auditor of Public Accounts, and the Legislative Research Commission, or their duly authorized representatives, shall have access to any books, documents, papers, records, or other evidence, which are directly pertinent to this contract for the purpose of financial audit or program review. Records and other prequalification information confidentially disclosed as part of the bid process shall not be deemed as directly pertinent to the contract and shall be exempt from disclosure as provided in KRS 61.878(1)(c). The contractor also recognizes that any books, documents, papers, records, or other evidence, received during a financial audit or program review shall be subject to the Kentucky Open Records Act, KRS 61.870 to 61.884.

In the event of a dispute between the contractor and the contracting agency, Attorney General, or the Auditor of Public Accounts over documents that are eligible for production and review, the Finance and Administration Cabinet shall review the dispute and issue a determination, in accordance with Secretary's Order 11-004.

06/01/16

**SPECIAL NOTE FOR RECIPROCAL PREFERENCE**

**Reciprocal preference to be given by public agencies to resident bidders**

**By reference, KRS 45A.490 to 45A.494 are incorporated herein and in compliance regarding the bidders residency. Bidders who want to claim resident bidder status should complete the Affidavit for Claiming Resident Bidder Status along with their bid in the Expedite Bidding Program. Submittal of the Affidavit should be done along with the bid in Bid Express.**

03/01/2011



## **SPECIAL NOTE FOR BRIDGE RESTORATION AND WATERPROOFING WITH CONCRETE OVERLAYS**

- I. DESCRIPTION.** Perform all work in accordance with the Kentucky Transportation Cabinet, Department of Highway's 2012 Standard Specifications for Road and Bridge Construction and applicable Supplemental Specifications, the Standard Drawings, this Note, and the attached detail drawings. Section references are to the Standard Specifications.

This work consists of the following: (1) Furnish all labor, materials, tools, and equipment; (2) Remove the existing overlay or machine prep the existing slab; (3) Complete full-depth and partial depth repairs as directed by the Engineer; (4) Repair/replace damaged and corroded reinforcing bars; (5) Place new concrete overlay and epoxy-sand slurry in accordance with Section 606; (6) Complete asphalt approach pavement; (7) Maintain and control traffic; and (8) Any other work specified as part of this contract.

All construction will be in accordance with Section 606 unless otherwise specified.

**II. MATERIALS.**

- A. Latex Concrete.** See Section 606.03.17.
- B. Class "M" Concrete.** Use either "M1" or "M2". See Section 601.
- C. Bituminous Asphalt.** Use CL2 ASPH SURF 0.38D PG64-22.
- D. Epoxy-Sand Slurry.** See Section 606.03.10.

**III. CONSTRUCTION.**

- A. Machine prep of existing slab.** For 035B00063N, remove concrete from existing slab to a depth of at least ¼" below the existing surface, and remove all patches completely, in accordance with the requirements of Section 606.03.03.
- B. Remove Existing Overlay.** In addition to Section 606.03.03, totally remove the existing concrete overlay for 022B00017N, 022B00063N, 032B00006N, 032B00007N, 091B00045N, and 103B00023N by milling.
- C. Partial Depth Slab Repair and Latex Overlay.** Remove areas determined to be unsound by the Engineer via hydrodemolition or via hand held jackhammers weighing less than 45lbs in accordance with Section 606.02.10 D. Repair/Replace all damaged or severely corroded reinforcing bars prior to partial depth repair operation. The Department will not measure material removal and will consider this work incidental to the bid item "PARTIAL DEPTH PATCHING". Mix and place Latex Modified Concrete Overlay in accordance with Sections 606.03.08 and 606.03.17.
- D. Asphalt Approach Pavement.** Mill each existing asphalt approach for a distance of 50' for 032B00006N, 022B00017N, 022B00063N and 091B00045N, and 100' for 032B00007N, 035B00063N, and 103B00023N from the bridge ends. Remove the bituminous material uniformly by making an edge key, so as to provide a smooth transition to the finished bridge when a new bituminous overlay of compacted depth of approximately 1½" is added to the approaches. The grinding depth may vary

depending of the condition of the existing approach and final elevation of bridge end.  
Dispose of all removed material away from the site.

**E. Surface Texturing.** Texture the concrete surface of the overlay in accordance with Section 609.03.10.

**IV. MEASUREMENT.** See Section 606 and the following:

**A. Latex Modified Concrete for Concrete Overlay.** The Department will measure the quantity in cubic yards using the theoretical volume as follows for each bridge:

<b>022B00017N</b>	<b>(206'x20'x1.50")</b>	<b>= 19.1 cuyd</b>
<b>022B00063N</b>	<b>(318'x26'x1.50")</b>	<b>= 38.3 cuyd</b>
<b>032B00006N</b>	<b>(106'x36.5'AVGx1.50")</b>	<b>= 17.9 cuyd</b>
<b>032B00007N</b>	<b>(56'x24'x1.50")</b>	<b>= 6.2 cuyd</b>
<b>035B00063N</b>	<b>(114'x24'x1.50")</b>	<b>= 12.7 cuyd</b>
<b>091B00045N</b>	<b>(159'x20'x1.50")</b>	<b>= 14.7 cuyd</b>
<b>103B00023N</b>	<b>(86'x20'x1.50")</b>	<b>= 8.0 cuyd</b>

**B. Latex Modified Concrete for Partial Depth Patching and variable thickness of Overlay.** The Department will measure the quantity in cubic yards by deducting the theoretical volume of bridge deck overlay (LMC) from the total volume (as indicated by the batch quantity tickets) of Concrete required to obtain the finished grade shown on the Plans or established by the Engineer.

**C. Machine Prep of Slab.** The Department will measure the machine preparation of the existing bridge deck for 035B00063N in square yards, which shall include all labor, equipment, and material needed to complete this work.

**D. Remove Existing Overlay.** The Department will measure the removal of the existing overlay for 022B00017N, 022B00063N, 032B00006N, 032B00007N, 091B00045N, and 103B00023N in square yards, which shall include all labor, equipment, and material needed to complete this work.

**E. Steel Reinforcement.** The Department will measure any reinforcing steel necessary for the partial or full depth patch in pounds, which shall include all labor, equipment, and material needed to complete this work.

**F. Asphalt Approach Pavement.** The Department will measure the quantity in square yards, which shall include all labor, equipment, and material needed to complete this work.

**V. PAYMENT.** See Section 606 and the following:

**A. Latex Modified Concrete for Overlay.** The Department will make payment for the Latex Modified Concrete under bid item #08534 "CONCRETE OVERLAY – LATEX" for the quantity in cubic yards complete in place.

**B. Latex Modified Concrete for Partial Depth Patching and variable thickness of Overlay.** The Department will make payment for the Partial Depth Patching under bid item #24094EC "PARTIAL DEPTH PATCHING". Payment will be for the quantity per cubic yard complete in place.

- C. Machine Prep of Slab.** The Department will make payment for the machine prep of existing slab for 035B00063N, under bid item #08551 “MACHINE PREP OF SLAB”. Payment will be for the square yard complete.
- D. Remove Existing Overlay.** The Department will make payment for the removal of the existing overlay for 022B00017N, 022B00063N, 032B00006N, 032B00007N, 091B00045N, and 103B00023N under the bid item #08510 “REM EPOXY BIT FOREIGN OVERLAY”. Payment will be for the square yard complete.
- E. Steel Reinforcement.** The Department will make payment for steel reinforcement, if necessary, under bid item #08150 “STEEL REINFORCEMENT”. Payment will be at the unit price per pound.
- F. Asphalt Approach Pavement.** The Department will make payment for the completed and accepted quantity of this work under the bid item #03304 “BRIDGE OVERLAY APPROACH PAVEMENT”.

## **SPECIAL NOTE FOR REPLACING EXPANSION DAMS AND/OR INSTALLING ARMORED EDGES FOR CONCRETE ON BRIDGES**

**I. DESCRIPTION.** Perform all work in accordance with the Kentucky Transportation Cabinet, Department of Highway's 2012 Standard Specifications for Road and Bridge Construction and applicable Supplemental Specifications, the Standard Drawings, this Note, and the attached detail drawings. Section references are to the Standard Specifications.

This work consists of the following: (1) Furnish all labor, materials, tools, and equipment; (2) Remove existing concrete and expansion device(s) and/or bridge ends; (3) Install armored edges and new concrete as specified and in accordance with the attached detail drawings; (4) Install new joint seals (where required); (5) Maintain and control traffic; and (6) Any other work specified as part of this contract.

### **II. MATERIALS.**

**A. Class "M" Concrete.** Use either "M1" or "M2". See Section 601.

**B. Structural Steel.** Use new, commercial grade steel suitable for welding. The Engineer will base acceptance on visual inspection. For armored edges that make up the 4" neoperene joint, use Steelflex Strip Seal expansion joint by DS Brown, or approved equal. To be approved, armored edge extrusions must be embedded.

**C. Stud Anchors.** The armored edge stud anchors are 3/4" x 6" embedded stud shear connectors conforming to ASTM A108, Grade 1015 (Nelson Studs or equal).

**D. Steel Reinforcement.** Use Grade 60. See Section 602.

**E. Epoxy Bond Coat.** See Section 511.

**F. Pre-Compressed Horizontal Expansion Joint System.** It shall have a cellular, or micro-cell, polyurethane foam impregnated with a hydrophobic acrylic emulsion, or a hydrophobic polymer. The polyurethane foam external facing shall be factory coated and cured with highway-grade, fuel resistant silicone or a highway-grade elastomeric coating at a width greater than the maximum joint expansion.

### **III. EQUIPMENT.**

**A. Hammers.** See Section 606.02.10 B.

**B. Sawing Equipment.** See Section 606.02.10 C.

**C. Hydraulic Impact Equipment.** See Section 606.02.10 D.

### **IV. CONSTRUCTION.**

**A. Remove Existing Materials.** Remove existing Expansion Dam, Bridge End, Armored Edges and specified areas of concrete as shown on the attached sketches. Remove debris and/or expansion joint filler as directed by the Engineer. . Clean and leave all existing steel reinforcement encountered in place. Damaged steel reinforcement will be repaired/replaced as directed by the Engineer at no additional cost to the Department.

Dispose of all removed material entirely away from the job site. This work is incidental to the contract unit price for "Expansion Joint Replacement" or "Armored Edge for Concrete".

**B. Place New Concrete and Armored Edges.** After all specified existing materials have been removed; place new armored edges to match the grade of the proposed overlay or to match the original grade (See attached detail drawings). Place the new Class "M" concrete to the scarified grade and finish to receive the new overlay or place the new Class "M" concrete to the original grade and finish with broom strokes drawn transversely from curb to curb.

All new structural steel shall be cleaned and painted in accordance with requirements of Section 607.03.23, except that surfaces to come in contact with concrete are not to be painted.

Blast clean all areas of existing concrete and structural steel to come in contact with new concrete until free of all laitance and deleterious substances immediately prior to the placement of the Class "M" Concrete. The surface areas of existing concrete to come in contact with the new Class "M" Concrete are to be coated with an epoxy bond coat immediately prior to placing new concrete in accordance with Section 511. The interfaces of the new and old concrete shall be as nearly vertical and horizontal as possible.

**C. Additional Steel Reinforcement.** Furnish for replacement, as directed by the Engineer, 7750 linear feet of #4 steel reinforcing bars in 20' lengths. Place these bars in areas deemed by the Engineer to require additional reinforcement. Field cutting and bending is permitted. Do not place any additional steel reinforcement above the height of the top row of Nelson Studs on the armored edges. Ensure that all exposed steel reinforcement is tied in accordance with Section 602.03.04 prior to pouring the new Class "M" concrete. Deliver unused bars to the Local County Maintenance Barn. Payment will be made in accordance with Section 602.

**D. Stage Construction.** Installation of concrete and armored edges in two (or more if specified) stages is necessary. Join the armored edges at or near the centerline of the roadway or lane line, field weld and grind smooth.

**E. Pre-Compressed Horizontal Expansion Joint System.** System shall be supplied in pre-compressed sticks for easy installation. System shall be installed in accordance with manufacturer's recommendations concerning approved adhesives, welds between sticks and appurtenances, and adhesion to concrete deck or armored edges. Joint seal is to be installed 1/2" recessed from the surface.

**F. Shop Plans.** Shop plans will not be required. The Contractor is responsible for obtaining field measurements and supplying properly sized materials to complete the work.

## V. MEASUREMENT.

**A. Expansion Joint Replacement – 2".** The Department will measure the quantity in linear feet from gutterline to gutterline along the centerline of the joint.

**B. Armored Edge for Concrete.** The Department will measure the quantity in linear feet from gutterline to gutterline along the face of the bridge end.

**C. Steel Reinforcement.** See Section 602.

## VI. PAYMENT.

**A. Expansion Joint Replacement – 2".** Payment at the contract unit price per linear foot is full compensation for removing specified existing materials, furnishing and

installing the new armored edges, concrete, neoprene strip seal or pre-compressed horizontal expansion joint system, and all incidental items necessary to complete the work (except the overlay material) within the specified pay limits as specified by this note and as shown on the attached detail drawings.

- B. Armored Edge for Concrete.** Payment at the contract unit price per linear foot is full compensation for removing specified existing materials, furnishing and installing the new armored edges, concrete and all incidental items necessary to complete the work (except the overlay material) within the specified pay limits as specified by this note and as shown on the attached detail drawings.
- C. Steel Reinforcement.** See Section 602.

## SPECIAL NOTE FOR ELIMINATING TRANSVERSE JOINTS ON BRIDGES

- I. **DESCRIPTION.** Perform all work in accordance with the Kentucky Transportation Cabinet, Department of Highway's 2012 Standard Specifications for Road and Bridge Construction.

Remove existing concrete and existing joint material to eliminate the transverse joint. Install additional reinforcing steel and place concrete.
  
- II. **MATERIALS.**
  - A. **Class "M" Concrete.** Use either "M1" or "M2". See Section 601.
  - B. **Steel Reinforcement.** Use Grade 60. See Section 602.
  - C. **Epoxy Bond Coat.** See Section 511.
  
- III. **EQUIPMENT.**
  - A. **Hammers.** See Section 606.02.10 B.
  - B. **Sawing Equipment.** See Section 606.02.10 C.
  - C. **Hydraulic Impact Equipment.** See Section 606.02.10 D.
  
- IV. **CONSTRUCTION.**
  - A. **Remove Existing Materials.** Remove the existing transverse joints, joint filler, and specified areas of concrete as shown on the plans, in accordance with Section 606.02.10 and 606.03.03, and as directed by the Engineer. Clean and leave all existing steel reinforcement encountered in place. Damaged steel reinforcement will be repaired/replaced as directed by the Engineer at no additional cost to the Department. Dispose of all removed material entirely away from the job site. This work is incidental to the contract unit price for "Eliminate Transverse Joint".
  - B. **Additional Steel Reinforcement.** Furnish for this work steel reinforcing bars as shown on the plans. Splice these bars to the existing longitudinal reinforcement in the deck and curb/sidewalk in the areas of removed concrete to tie the slabs together as shown on the plans. Ensure that all exposed steel reinforcement is tied in accordance with Section 602.03.04 prior to pouring the new Class "M" concrete.
  - C. **Place New Concrete.** Blast clean all areas of existing concrete and structural steel to come in contact with new concrete until free of all laitance and deleterious substances immediately prior to the placement of the Class "M" Concrete. The surface areas of existing concrete to come in contact with the new Class "M" Concrete are to be coated with an epoxy bond coat immediately prior to placing new concrete in accordance with Section 511. The interfaces of the new and old concrete shall be as nearly vertical and horizontal as possible.

Place new Class "M" Concrete to the specified grade and finish to receive the new overlay or as shown on the plans. On the sidewalk and curb, place the new concrete to original grade and finish to match the existing curb/sidewalk.
  
- V. **MEASUREMENT.**
  - A. **Eliminate Transverse Joint.** The Department will measure the quantity in linear feet from plinth to plinth perpendicular to the centerline of the bridge.

**B. Steel Reinforcement.** See Section 602.

**VI. PAYMENT.**

**A. Eliminate Transverse Joint.** Payment at the contract unit price per linear foot is full compensation for furnishing equipment, labor, tools and materials needed to complete removal and disposal of the specified existing materials, cleaning and straightening of existing steel reinforcement, furnishing and installing the concrete, and all incidental items necessary to complete the work (except the overlay material if specified elsewhere in the contract) within the specified pay limits as indicated on the drawings.

**B. Steel Reinforcement.** See Section 602.



**SPECIAL NOTE FOR CONTRACT COMPLETION DATE AND LIQUIDATED DAMAGES ON BRIDGE REPAIR CONTRACTS**

- I. COMPLETION DATE.** The Contractor has the option of selecting the starting date for this Contract. Once selected, notify the Department in writing of the date selected at least two weeks prior to beginning work. All work is to be completed by November 15, 2018. An allotted number of Calendar days are assigned to each structure in this contract as shown below.

<u>STRUCTURE</u>	<u>NO. OF CALENDAR DAYS</u>	<u>COMPLETION DATE</u>
022B00017N	30	November 15, 2018
022B00063N	30	November 15, 2018
032B00006N	30	November 15, 2018
032B00007N	30	November 15, 2018
035B00063N	30	November 15, 2018
091B00045N	30	November 15, 2018
103B00023N	30	November 15, 2018

Contrary to Section 108.07.02, the Engineer will begin charging calendar days for a structure on the day the Contractor starts work or sets up traffic control on that particular structure.

- II. LIQUIDATED DAMAGES.** Liquidated damages will be assessed the Contractor in accordance with the Transportation Cabinet, Department of Highway's 2012 Standard Specifications for Road and Bridge Construction, Section 108.09, when either the allotted number of calendar days or the November 15, 2018 date is exceeded.

Contrary to the Standard Specifications, liquidated damages will be assessed the Contractor during the months of December, January, February and March when the contract time has expired on any individual bridge or bridges. Contract time will be charged during these months.

All construction must be completed in accordance with the weather limitations specified in Section 606 and/or Section 601 as applicable. No extension of Contract time will be granted due to inclement weather or temperature limitations that occur due to starting work on the Contract or a structure late in the construction season.

## **SPECIAL NOTE FOR TRAFFIC CONTROL ON BRIDGE REPAIR CONTRACTS**

### **I. TRAFFIC CONTROL GENERAL**

Except as provided herein, traffic shall be maintained in accordance with the 2012 Standard Specifications, Section 112. Except for the roadway and traffic control bid items listed, all items of work necessary to maintain and control traffic will be paid at the lump sum bid price to "Maintain and Control Traffic".

Contrary to Section 106.01, traffic control devices used on this project may be new or used in new condition, at the beginning of the work and maintained in like new condition until completion of the work.

### **II. TRAFFIC COORDINATOR**

Furnish a Traffic Coordinator as per Section 112. The Traffic Coordinator shall inspect the project maintenance of traffic, at least three times daily, or as directed by the Engineer, during the Contractor's operations and at any time a lane closure is in place. The personnel shall have access on the project to a radio or telephone to be used in case of emergencies or accidents.

The Traffic Coordinator shall report all incidents throughout the work zone to the Engineer on the project. The Contractor shall furnish the name and telephone number where the Traffic Coordinator can be contacted at all times.

### **III. SIGNS**

Contrary to Section 112.04.02, only long term signs (sign intended to be continuously in place for more than 3 days) will be measured for payment; short term signs (signs intended to be left in place for 3 days or less) will not be measured for payment but will be incidental to Maintain and Control Traffic.

The contractor is to install warning signs for wide loads in advance of the bridge under the direction of the Engineer. The Department will not measure installation, maintenance, or removal for payment, and will consider these incidentals to Maintain and Control Traffic.

### **IV. TEMPORARY PAVEMENT STRIPING**

Skip lines and/or solid lines through the length of the tapers for lane closures and other striping as directed by the Engineer shall be temporarily covered with 6" black removable tape. Permanent removal of all other pavement striping for traffic control shall be considered incidental to Maintain and Control Traffic. Temporary pavement striping shall be paid only once per course in accordance with Section 112.04.07. The Contractor shall replace any temporary striping that becomes damaged or fails to adhere to the pavement before dark on the day of the notification. Liquidated damages shall be assessed to the Contractor at a rate of \$500 per day for failing to replace temporary striping within this time limit.

## V. PROJECT PHASING & CONSTRUCTION PROCEDURES

Maintain one lane of traffic during construction in accordance with Standard Drawing No. TTC-110 for lane closures, and the attached detail drawing. The minimum clear lane width required shall be as follows:

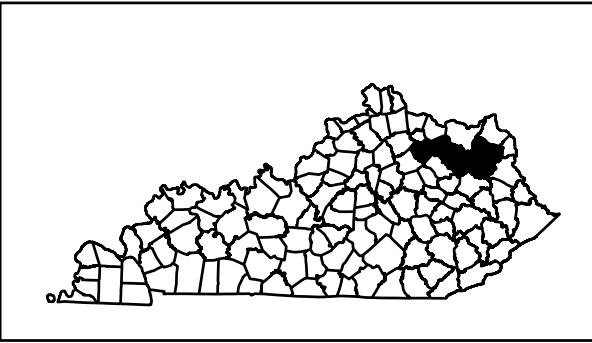
022B00017N	9'-6"
022B00063N	12'-0"
032B00006N	13'-0"
032B00007N	11'-0"
035B00063N	11'-0"
091B00045N	9'-6"
103B00023N	9'-6"

## VI. TEMPORARY SIGNAL

Provide, install, and maintain a temporary 2 phase signal or multi phase traffic signal as specified below. The Contractor must provide a 24-hour contact person and number available to maintain the temporary signals as needed.

022B00017N	multi-phase
022B00063N	2 phase
032B00006N	multi-phase
032B00007N	multi-phase
035B00063N	2 phase
091B00045N	2 phase
103B00023N	2 phase

# CARTER, ELLIOT, FLEMING, NICHOLAS, & ROWAN COUNTIES



BRIDGE 091B00045N  
KY 57 (MP 1.174)  
OVER SOMERSET CREEK  
LatDD= 38.2317, LonDD= -84.0056

BRIDGE 035B00063N  
KY 1013 (MP 9.613)  
OVER FOX CREEK  
LatDD= 38.3448, LonDD= -83.5337

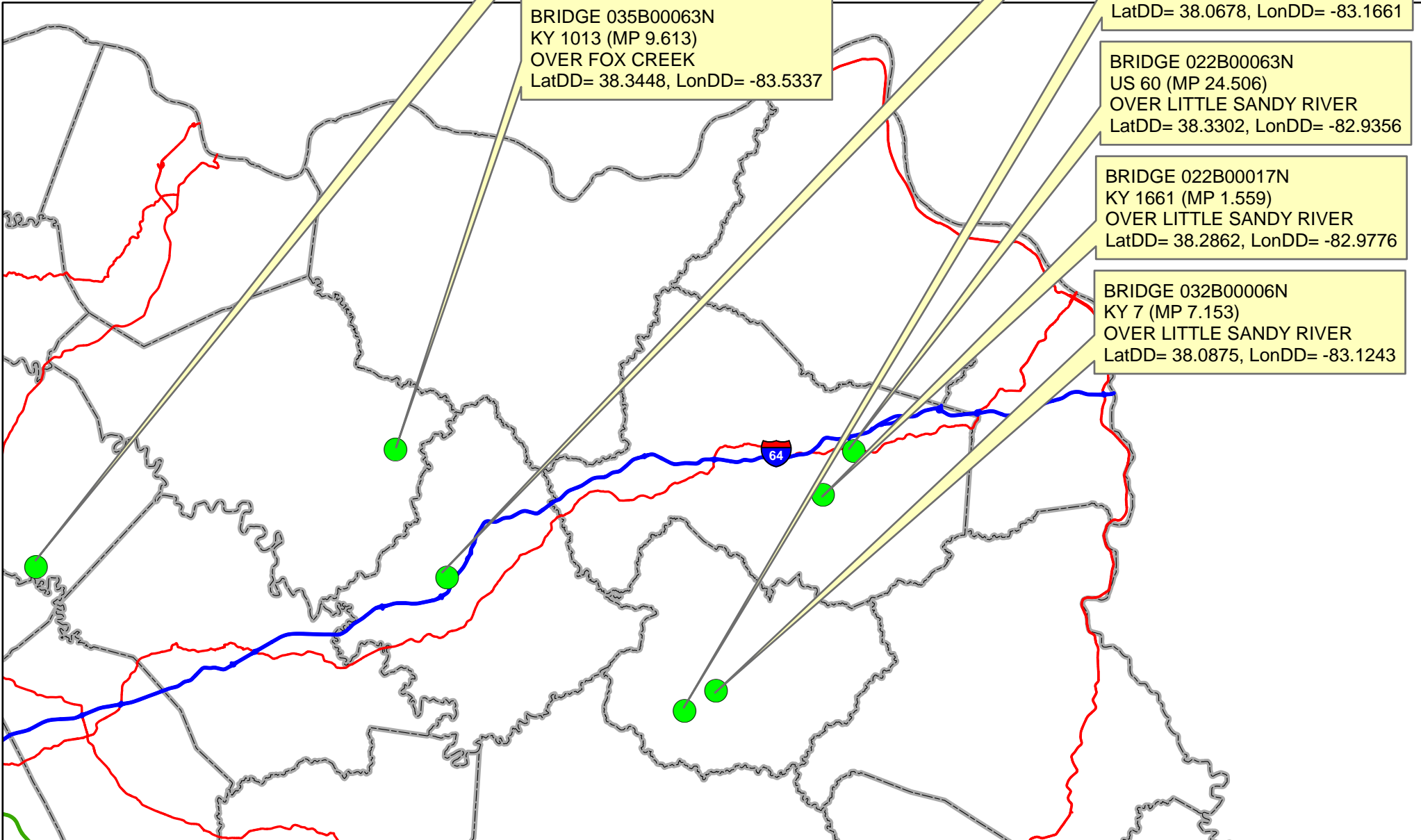
BRIDGE 0103B00023N  
KY 377 (MP 0.58)  
OVER BRUSHY CREEK  
LatDD= 38.2116, LonDD= -83.4701

BRIDGE 032B00007N  
KY 7 (MP 4.147)  
OVER DOCTORS BRANCH  
LatDD= 38.0678, LonDD= -83.1661

BRIDGE 022B00063N  
US 60 (MP 24.506)  
OVER LITTLE SANDY RIVER  
LatDD= 38.3302, LonDD= -82.9356

BRIDGE 022B00017N  
KY 1661 (MP 1.559)  
OVER LITTLE SANDY RIVER  
LatDD= 38.2862, LonDD= -82.9776

BRIDGE 032B00006N  
KY 7 (MP 7.153)  
OVER LITTLE SANDY RIVER  
LatDD= 38.0875, LonDD= -83.1243



# MATERIAL SUMMARY

**CONTRACT ID: 172918**

**121GR17M072 - FE02**

**MB02200601701**

US 60 (MP 24.505). BRIDGE OVER LITTLE SANDY RIVER. BRIDGE DECK RESTORATION & WATERPROOFING.

Project Line No	Bid Code	DESCRIPTION	Quantity	Unit
0400	02562	TEMPORARY SIGNS	149.00	SQFT
0405	02650	MAINTAIN & CONTROL TRAFFIC - APPLIES TO 022B00063N (ADDED: 11-27-17)	1.00	LS
0410	02653	LANE CLOSURE	2.00	EACH
0415	03295	EXPAN JOINT REPLACE 2 IN	52.00	LF
0420	03299	ARMORED EDGE FOR CONCRETE	52.00	LF
0425	03300	ELIMINATE TRANSVERSE JOINT	93.00	LF
0430	03302	REPAIR CONCRETE CURB	120.00	LF
0435	03304	BRIDGE OVERLAY APPROACH PAVEMENT	289.00	SQYD
0440	04933	TEMP SIGNAL 2 PHASE	1.00	EACH
0445	06514	PAVE STRIPING-PERM PAINT-4 IN	1,672.00	LF
0450	06549	PAVE STRIPING-TEMP REM TAPE-B	500.00	LF
0455	06550	PAVE STRIPING-TEMP REM TAPE-W	1,000.00	LF
0460	06551	PAVE STRIPING-TEMP REM TAPE-Y	2,000.00	LF
0465	08150	STEEL REINFORCEMENT	1,469.60	LB
0470	08504	EPOXY SAND SLURRY	306.20	SQYD
0475	08510	REM EPOXY BIT FOREIGN OVERLAY	919.00	SQYD
0480	08526	CONC CLASS M FULL DEPTH PATCH	20.00	CUYD
0485	08534	CONCRETE OVERLAY-LATEX	38.30	CUYD
0490	08549	BLAST CLEANING	1,225.00	SQYD
0495	24094EC	PARTIAL DEPTH PATCHING	25.50	CUYD
0500	02569	DEMOBILIZATION	1.00	LS

# MATERIAL SUMMARY

**CONTRACT ID: 172918**

**121GR17M072 - FE02**

**MB02216611701**

KY 1661 (MP 1.559). BRIDGE OVER LITTLE SANDY RIVER. BRIDGE DECK RESTORATION & WATERPROOFING.

Project Line No	Bid Code	DESCRIPTION	Quantity	Unit
0305	02562	TEMPORARY SIGNS	149.00	SQFT
0310	02650	MAINTAIN & CONTROL TRAFFIC - APPLIES TO 022B00017N	1.00	LS
0315	02653	LANE CLOSURE	2.00	EACH
0320	03299	ARMORED EDGE FOR CONCRETE	40.00	LF
0325	03304	BRIDGE OVERLAY APPROACH PAVEMENT	222.00	SQYD
0330	04933	TEMP SIGNAL 2 PHASE	1.00	EACH
0335	06514	PAVE STRIPING-PERM PAINT-4 IN	612.00	LF
0340	06549	PAVE STRIPING-TEMP REM TAPE-B	500.00	LF
0345	06550	PAVE STRIPING-TEMP REM TAPE-W	1,000.00	LF
0350	06551	PAVE STRIPING-TEMP REM TAPE-Y	2,000.00	LF
0355	08150	STEEL REINFORCEMENT	267.20	LB
0360	08504	EPOXY SAND SLURRY	141.10	SQYD
0365	08510	REM EPOXY BIT FOREIGN OVERLAY	458.00	SQYD
0370	08526	CONC CLASS M FULL DEPTH PATCH	10.00	CUYD
0375	08534	CONCRETE OVERLAY-LATEX	19.10	CUYD
0380	08549	BLAST CLEANING	599.00	SQYD
0385	24094EC	PARTIAL DEPTH PATCHING	12.70	CUYD
0390	02569	DEMOBILIZATION	1.00	LS
0395	03295	EXPAN JOINT REPLACE 2 IN	40.00	LF

# MATERIAL SUMMARY

**CONTRACT ID: 172918**

**121GR17M072 - FE02**

**MB03200071701**

KY 7 (MP 7.153). BRIDGE OVER LITTLE SANDY RIVER BRIDGE DECK RESTORATION & WATERPROOFING.

Project Line No	Bid Code	DESCRIPTION	Quantity	Unit
0505	02562	TEMPORARY SIGNS	149.00	SQFT
0510	02650	MAINTAIN & CONTROL TRAFFIC - APPLIES TO 032B00006N	1.00	LS
0515	02653	LANE CLOSURE	2.00	EACH
0520	03299	ARMORED EDGE FOR CONCRETE	88.00	LF
0525	03300	ELIMINATE TRANSVERSE JOINT	34.00	LF
0530	03304	BRIDGE OVERLAY APPROACH PAVEMENT	500.00	SQYD
0535	04934	TEMP SIGNAL MULTI PHASE	1.00	EACH
0540	06514	PAVE STRIPING-PERM PAINT-4 IN	624.00	LF
0545	06549	PAVE STRIPING-TEMP REM TAPE-B	500.00	LF
0550	06550	PAVE STRIPING-TEMP REM TAPE-W	1,000.00	LF
0555	06551	PAVE STRIPING-TEMP REM TAPE-Y	2,000.00	LF
0560	08150	STEEL REINFORCEMENT	567.80	LB
0565	08504	EPOXY SAND SLURRY	102.10	SQYD
0570	08510	REM EPOXY BIT FOREIGN OVERLAY	430.00	SQYD
0575	08526	CONC CLASS M FULL DEPTH PATCH	4.00	CUYD
0580	08534	CONCRETE OVERLAY-LATEX	17.90	CUYD
0585	08549	BLAST CLEANING	532.00	SQYD
0590	24094EC	PARTIAL DEPTH PATCHING	11.90	CUYD
0595	02569	DEMOBILIZATION	1.00	LS

# MATERIAL SUMMARY

**CONTRACT ID: 172918**

**121GR17M072 - FE02**

**MB03200071702**

KY 7 (MP 4.147). BRIDGE OVER DOCTORS BRANCH. BRIDGE DECK RESTORATION & WATERPROOFING.

Project Line No	Bid Code	DESCRIPTION	Quantity	Unit
0600	02562	TEMPORARY SIGNS	149.00	SQFT
0605	02650	MAINTAIN & CONTROL TRAFFIC - APPLIES TO 032B00007N	1.00	LS
0610	02653	LANE CLOSURE	2.00	EACH
0615	03299	ARMORED EDGE FOR CONCRETE	67.90	LF
0620	03300	ELIMINATE TRANSVERSE JOINT	37.30	LF
0625	03304	BRIDGE OVERLAY APPROACH PAVEMENT	533.00	SQYD
0630	04934	TEMP SIGNAL MULTI PHASE	1.00	EACH
0635	06514	PAVE STRIPING-PERM PAINT-4 IN	1,024.00	LF
0640	06549	PAVE STRIPING-TEMP REM TAPE-B	500.00	LF
0645	06550	PAVE STRIPING-TEMP REM TAPE-W	1,000.00	LF
0650	06551	PAVE STRIPING-TEMP REM TAPE-Y	2,000.00	LF
0655	08150	STEEL REINFORCEMENT	567.80	LB
0660	08504	EPOXY SAND SLURRY	43.60	SQYD
0665	08510	REM EPOXY BIT FOREIGN OVERLAY - EXISTING ASPHALT OVERLAY VARIES BETWEEN 6" - 12"	149.00	SQYD
0670	08526	CONC CLASS M FULL DEPTH PATCH	6.00	CUYD
0675	08534	CONCRETE OVERLAY-LATEX	6.20	CUYD
0680	08549	BLAST CLEANING	193.00	SQYD
0685	24094EC	PARTIAL DEPTH PATCHING	4.10	CUYD
0690	02569	DEMOBILIZATION	1.00	LS



# MATERIAL SUMMARY

**CONTRACT ID: 172918**

**121GR17M072 - FE02**

**MB03510131701**

KY 1013 (MP 9.613). BRIDGE OVER FOX CREEK. BRIDGE DECK RESTORATION & WATERPROOFING.

Project Line No	Bid Code	DESCRIPTION	Quantity	Unit
0005	02562	TEMPORARY SIGNS	149.00	SQFT
0010	02650	MAINTAIN & CONTROL TRAFFIC - APPLIES TO 035B00063N (ADDED: 11-27-17)	1.00	LS
0015	02653	LANE CLOSURE	2.00	EACH
0020	03299	ARMORED EDGE FOR CONCRETE	55.40	LF
0025	03300	ELIMINATE TRANSVERSE JOINT	63.40	LF
0030	03304	BRIDGE OVERLAY APPROACH PAVEMENT	533.00	SQYD
0035	04933	TEMP SIGNAL 2 PHASE	1.00	EACH
0040	06514	PAVE STRIPING-PERM PAINT-4 IN	628.00	LF
0045	06549	PAVE STRIPING-TEMP REM TAPE-B	500.00	LF
0050	06550	PAVE STRIPING-TEMP REM TAPE-W	1,000.00	LF
0055	06551	PAVE STRIPING-TEMP REM TAPE-Y	2,000.00	LF
0060	08150	STEEL REINFORCEMENT	868.40	LB
0065	08504	EPOXY SAND SLURRY	97.10	SQYD
0070	08526	CONC CLASS M FULL DEPTH PATCH	4.00	CUYD
0075	08534	CONCRETE OVERLAY-LATEX	12.70	CUYD
0080	08549	BLAST CLEANING	401.00	SQYD
0085	08551	MACHINE PREP OF SLAB	304.00	SQYD
0090	24094EC	PARTIAL DEPTH PATCHING	8.40	CUYD
0095	02569	DEMOBILIZATION	1.00	LS
0100	23879EC	ACRYLIC GLASS	54.00	SQFT

# MATERIAL SUMMARY

**CONTRACT ID: 172918**

**121GR17M072 - FE02**

**MB09100571701**

KY 57 (MP 1.174). BRIDGE OVER SOMERSET CREEK. BRIDGE DECK RESTORATION & WATERPROOFING.

Project Line No	Bid Code	DESCRIPTION	Quantity	Unit
0105	02562	TEMPORARY SIGNS	149.00	SQFT
0110	02650	MAINTAIN & CONTROL TRAFFIC - APPLIES TO 091B00045N	1.00	LS
0115	02653	LANE CLOSURE	2.00	EACH
0120	03299	ARMORED EDGE FOR CONCRETE	56.60	LF
0125	03300	ELIMINATE TRANSVERSE JOINT	64.60	LF
0130	03304	BRIDGE OVERLAY APPROACH PAVEMENT	222.00	SQYD
0135	04933	TEMP SIGNAL 2 PHASE	1.00	EACH
0140	06514	PAVE STRIPING-PERM PAINT-4 IN	1,036.00	LF
0145	06549	PAVE STRIPING-TEMP REM TAPE-B	500.00	LF
0150	06550	PAVE STRIPING-TEMP REM TAPE-W	1,000.00	LF
0155	06551	PAVE STRIPING-TEMP REM TAPE-Y	2,000.00	LF
0160	08150	STEEL REINFORCEMENT	868.40	LB
0165	08504	EPOXY SAND SLURRY	135.40	SQYD
0170	08510	REM EPOXY BIT FOREIGN OVERLAY	353.00	SQYD
0175	08526	CONC CLASS M FULL DEPTH PATCH	4.00	CUYD
0180	08534	CONCRETE OVERLAY-LATEX	14.70	CUYD
0185	08549	BLAST CLEANING	489.00	SQYD
0190	24094EC	PARTIAL DEPTH PATCHING	9.80	CUYD
0195	02569	DEMOBILIZATION	1.00	LS
0200	23879EC	ACRYLIC GLASS	135.00	SQFT

# MATERIAL SUMMARY

**CONTRACT ID: 172918**

**121GR17M072 - FE02**

**MB10303771701**

KY 377 (MP 0.58). BRIDGE OVER BRUSHY CREEK. BRIDGE DECK RESTORATION & WATERPROOFING.

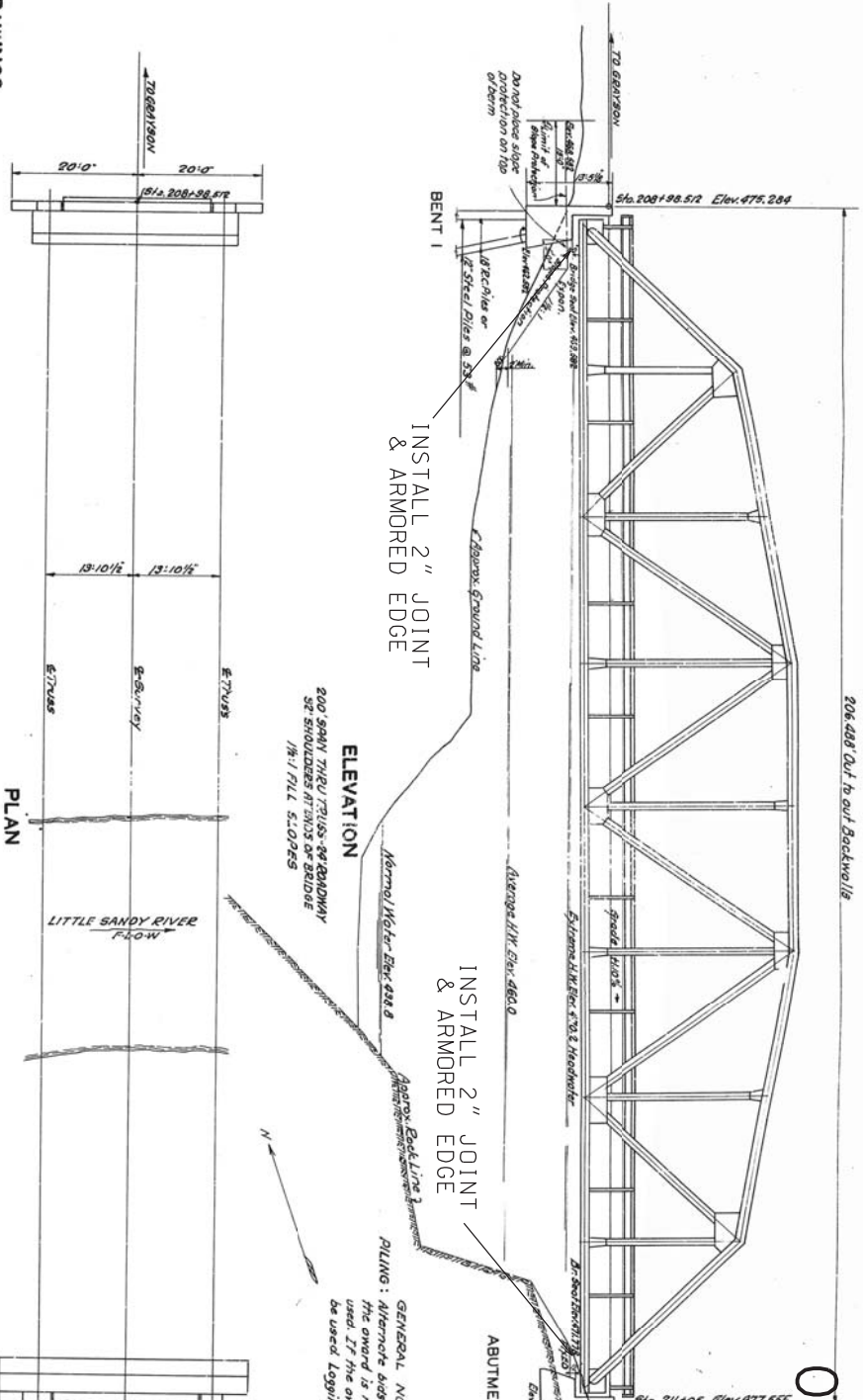
Project Line No	Bid Code	DESCRIPTION	Quantity	Unit
0205	02562	TEMPORARY SIGNS	149.00	SQFT
0210	02650	MAINTAIN & CONTROL TRAFFIC - APPLIES TO 103B00023N	1.00	LS
0215	02653	LANE CLOSURE	2.00	EACH
0220	03299	ARMORED EDGE FOR CONCRETE	40.00	LF
0225	03300	ELIMINATE TRANSVERSE JOINT	23.30	LF
0230	03304	BRIDGE OVERLAY APPROACH PAVEMENT	444.00	SQYD
0235	04933	TEMP SIGNAL 2 PHASE	1.00	EACH
0240	06514	PAVE STRIPING-PERM PAINT-4 IN	1,144.00	LF
0245	06549	PAVE STRIPING-TEMP REM TAPE-B	500.00	LF
0250	06550	PAVE STRIPING-TEMP REM TAPE-W	1,000.00	LF
0255	06551	PAVE STRIPING-TEMP REM TAPE-Y	2,000.00	LF
0260	08150	STEEL REINFORCEMENT	567.80	LB
0265	08504	EPOXY SAND SLURRY	66.90	SQYD
0270	08510	REM EPOXY BIT FOREIGN OVERLAY - EXISTING ASPHALT OVERLAY VARIES BETWEEN 6" - 12"	191.00	SQYD
0275	08526	CONC CLASS M FULL DEPTH PATCH	10.00	CUYD
0280	08534	CONCRETE OVERLAY-LATEX	8.00	CUYD
0285	08549	BLAST CLEANING	258.00	SQYD
0290	22146EN	CONCRETE PATCHING REPAIR	20.00	SQFT
0295	24094EC	PARTIAL DEPTH PATCHING	5.30	CUYD
0300	02569	DEMOBILIZATION	1.00	LS

DESIGNED BY: <b>KDC</b>	CHECKED BY: <b>ODP</b>	DATE: <b>3/97</b>	REVIEWED: <b>For Alternate Pile bid</b>	DATE: <b>3/97</b>
TRACED BY: <b>SLB</b>	CHECKED BY: <b>SLB</b>	DATE: <b>1-97</b>	REVIEWED:	DATE:

- LIST OF DRAWINGS**
- 1 LAYOUT
  - 2 END BENT 1
  - 3 ABUTMENT 2
  - 4 STRESS SHEET
  - 5 TRUSS DETAILS
  - 6 TRUSS DETAILS & SHOES
  - 7 TRUSS DETAILS
  - 8 EXPANSION DEVICE & HANDRAIL
  - 9 SLAB DETAILS
  - 10 BORINGS
  - 11 G. 351 EXP. J. MATERIAL & COPPER STRIP
  - 12 SLOPE PROTECTION
  - 13 I.R.C. PILES
  - 14 MATCH MARKING DIAGRAM

**ESTIMATE OF QUANTITIES**

SUPERSTRUCTURE CONTRACT		SUBSTRUCTURE CONTRACT	
STRUCTURAL STEEL	3000 Lbs.	CONCRETE	1200 cu yd
REINFORCEMENT	2500 Lbs.	FORMWORK	1500 sq yd
TRUSS	1500 Lbs.	PAVEMENT	1000 cu yd
TRUSS DETAILS	1000 Lbs.	GRADING	500 cu yd
TRUSS DETAILS & SHOES	800 Lbs.	LANDSCAPING	200 cu yd
TRUSS DETAILS	600 Lbs.	UTILITIES	100 cu yd
EXPANSION DEVICE & HANDRAIL	400 Lbs.	OTHER	50 cu yd
SLAB DETAILS	300 Lbs.		
BORINGS	200 Lbs.		
G. 351 EXP. J. MATERIAL & COPPER STRIP	150 Lbs.		
SLOPE PROTECTION	100 Lbs.		
I.R.C. PILES	80 Lbs.		
MATCH MARKING DIAGRAM	50 Lbs.		



**GENERAL NOTES**

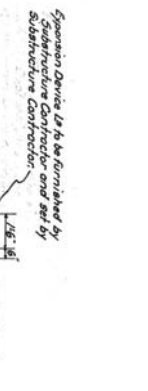
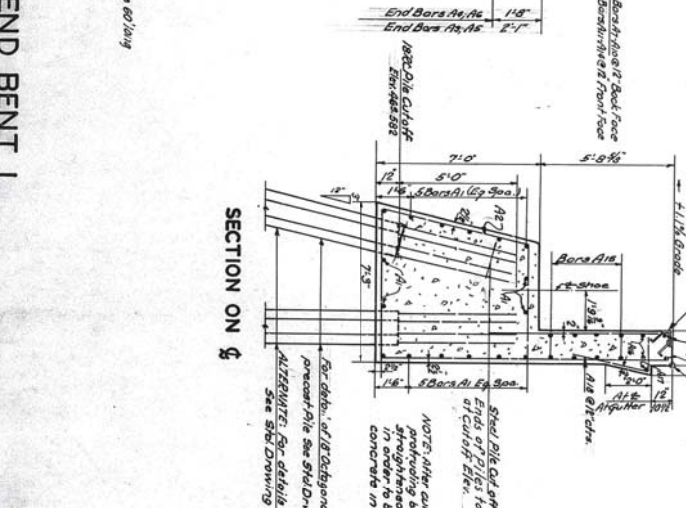
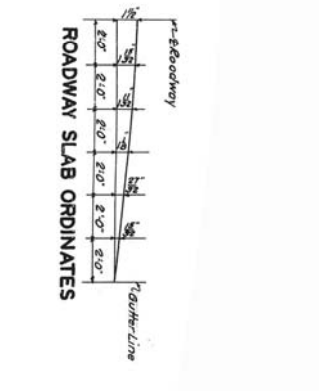
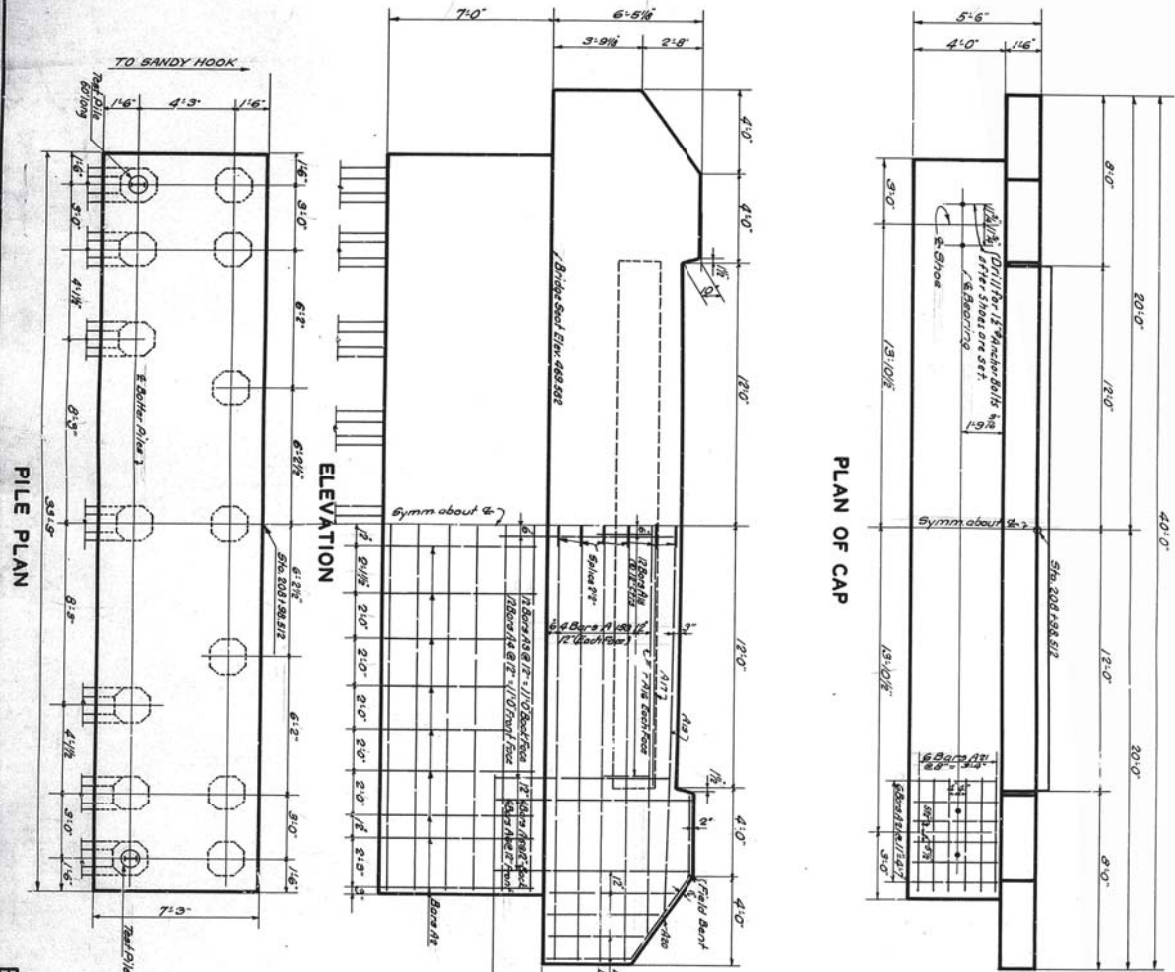
REVISIONS: Kentucky Department of Highways (1945 Standard with Amendments)  
 DESIGN SPECIFICATIONS: AASHO, 1944 Specifications for Highway Building  
 CONCRETE: Class 4 Concrete to be used throughout.  
 REINFORCEMENT: Dimensions shown from face of concrete are clearances. Dimensions  
 REINFORCED CONCRETE: All reinforcement shall be provided in accordance with provisions of the  
 COOPER STRIP-EXPANSION JOINT: The use of these items to be included in the unit  
 price bid for Class 4 concrete.  
 CAST IRON: See sheet 1 for Foundation Note and Specifications  
 STRUCTURAL STEEL: See sheet 4 for Specifications and general notes.  
 PILING: Piling shall be driven to refusal or penetration of minimum load of 35 tons  
 TEST PILES: Test Piles are indicated thus (P) on facing Plans and shall be accurately  
 located so as to be used in the finished structure.  
 STRUCTURE EXCAVATION: Excavation has been calculated in accordance with  
 Division 2 Section 4. of this book of Highways (1945 Specifications and Payment  
 Schedule) and shall be provided for in the contract.  
 ANCHOR BOLTS: The Superstructure Contractor shall drill 6\"/>

<b>CONTRACT</b>	<b>SHEETS</b>	<b>TOTAL NO. OF SHEETS</b>
1-2-3-4-5-6-7-8-9-10-11-12-13-14-15-16-17-18-19-20-21-22-23-24-25-26-27-28-29-30-31-32-33-34-35-36-37-38-39-40-41-42-43-44-45-46-47-48-49-50-51-52-53-54-55-56-57-58-59-60-61-62-63-64-65-66-67-68-69-70-71-72-73-74-75-76-77-78-79-80-81-82-83-84-85-86-87-88-89-90-91-92-93-94-95-96-97-98-99-100-101-102-103-104-105-106-107-108-109-110-111-112-113-114-115-116-117-118-119-120-121-122-123-124-125-126-127-128-129-130-131-132-133-134-135-136-137-138-139-140-141-142-143-144-145-146-147-148-149-150-151-152-153-154-155-156-157-158-159-160-161-162-163-164-165-166-167-168-169-170-171-172-173-174-175-176-177-178-179-180-181-182-183-184-185-186-187-188-189-190-191-192-193-194-195-196-197-198-199-200-201-202-203-204-205-206-207-208-209-210-211-212-213-214-215-216-217-218-219-220-221-222-223-224-225-226-227-228-229-230-231-232-233-234-235-236-237-238-239-240-241-242-243-244-245-246-247-248-249-250-251-252-253-254-255-256-257-258-259-260-261-262-263-264-265-266-267-268-269-270-271-272-273-274-275-276-277-278-279-280-281-282-283-284-285-286-287-288-289-290-291-292-293-294-295-296-297-298-299-300-301-302-303-304-305-306-307-308-309-310-311-312-313-314-315-316-317-318-319-320-321-322-323-324-325-326-327-328-329-330-331-332-333-334-335-336-337-338-339-340-341-342-343-344-345-346-347-348-349-350-351-352-353-354-355-356-357-358-359-360-361-362-363-364-365-366-367-368-369-370-371-372-373-374-375-376-377-378-379-380-381-382-383-384-385-386-387-388-389-390-391-392-393-394-395-396-397-398-399-400-401-402-403-404-405-406-407-408-409-410-411-412-413-414-415-416-417-418-419-420-421-422-423-424-425-426-427-428-429-430-431-432-433-434-435-436-437-438-439-440-441-442-443-444-445-446-447-448-449-450-451-452-453-454-455-456-457-458-459-460-461-462-463-464-465-466-467-468-469-470-471-472-473-474-475-476-477-478-479-480-481-482-483-484-485-486-487-488-489-490-491-492-493-494-495-496-497-498-499-500-501-502-503-504-505-506-507-508-509-510-511-512-513-514-515-516-517-518-519-520-521-522-523-524-525-526-527-528-529-530-531-532-533-534-535-536-537-538-539-540-541-542-543-544-545-546-547-548-549-550-551-552-553-554-555-556-557-558-559-560-561-562-563-564-565-566-567-568-569-570-571-572-573-574-575-576-577-578-579-580-581-582-583-584-585-586-587-588-589-590-591-592-593-594-595-596-597-598-599-600-601-602-603-604-605-606-607-608-609-610-611-612-613-614-615-616-617-618-619-620-621-622-623-624-625-626-627-628-629-630-631-632-633-634-635-636-637-638-639-640-641-642-643-644-645-646-647-648-649-650-651-652-653-654-655-656-657-658-659-660-661-662-663-664-665-666-667-668-669-670-671-672-673-674-675-676-677-678-679-680-681-682-683-684-685-686-687-688-689-690-691-692-693-694-695-696-697-698-699-700-701-702-703-704-705-706-707-708-709-710-711-712-713-714-715-716-717-718-719-720-721-722-723-724-725-726-727-728-729-730-731-732-733-734-735-736-737-738-739-740-741-742-743-744-745-746-747-748-749-750-751-752-753-754-755-756-757-758-759-760-761-762-763-764-765-766-767-768-769-770-771-772-773-774-775-776-777-778-779-780-781-782-783-784-785-786-787-788-789-790-791-792-793-794-795-796-797-798-799-800-801-802-803-804-805-806-807-808-809-810-811-812-813-814-815-816-817-818-819-820-821-822-823-824-825-826-827-828-829-830-831-832-833-834-835-836-837-838-839-840-841-842-843-844-845-846-847-848-849-850-851-852-853-854-855-856-857-858-859-860-861-862-863-864-865-866-867-868-869-870-871-872-873-874-875-876-877-878-879-880-881-882-883-884-885-886-887-888-889-890-891-892-893-894-895-896-897-898-899-900-901-902-903-904-905-906-907-908-909-910-911-912-913-914-915-916-917-918-919-920-921-922-923-924-925-926-927-928-929-930-931-932-933-934-935-936-937-938-939-940-941-942-943-944-945-946-947-948-949-950-951-952-953-954-955-956-957-958-959-960-961-962-963-964-965-966-967-968-969-970-971-972-973-974-975-976-977-978-979-980-981-982-983-984-985-986-987-988-989-990-991-992-993-994-995-996-997-998-999-1000	15	15

**COMMONWEALTH OF KENTUCKY**  
 DEPARTMENT OF HIGHWAYS  
 COUNTY OF RANDOLPH  
 PROJECT NO. 52-68-17  
 ROAD NO. 6684  
**CARTER SANDY RIVER**  
 STATION 210+01.756  
 BRIDGE NUMBER 41 P. 22-68-5

022B00017N

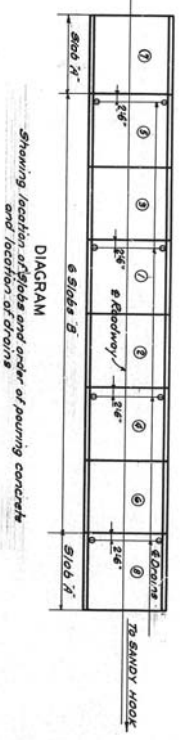
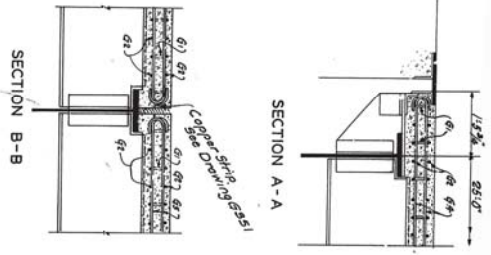
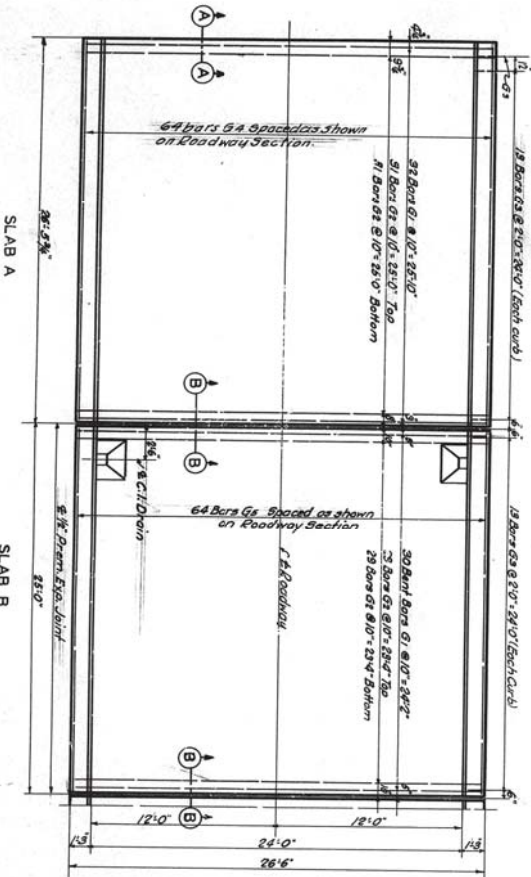
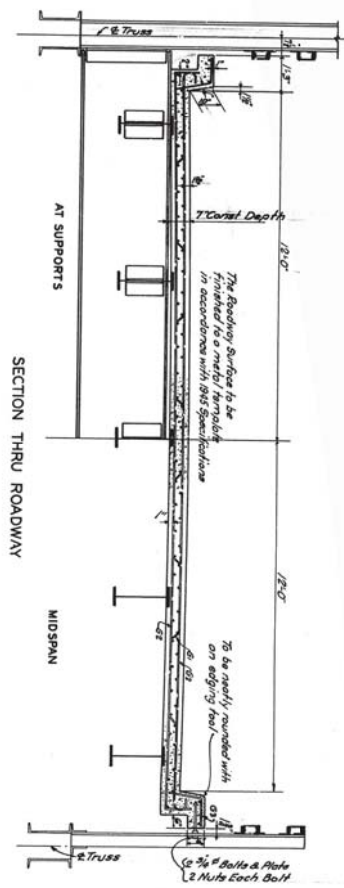
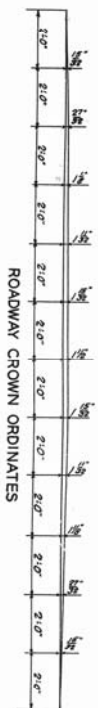
DESIGNED BY: <i>N. D. GARY</i>	CHECKED BY: <i>Edell</i>	DATE: _____	REVISION: <i>For Alternate Pile bid</i>	DATE: <i>3/4/9</i>
DRAWN BY: _____	CHECKED BY: _____	DATE: _____	REVISION: _____	DATE: _____
TRACED BY: <i>Gibbs/H/9/96</i>	CHECKED BY: _____	DATE: <i>8-86</i>	REVISION: _____	DATE: _____



BILL OF REINFORCEMENT									
NO.	DESCRIPTION	LENGTH	LOCATION	QTY	UNIT	QTY	UNIT	QTY	UNIT
1	1/2" Dia. Bars	178.53	Longitudinal in Cap	178.53	FT.	178.53	FT.	178.53	FT.
2	1/2" Dia. Bars	13.00	Vertical in Deck	13.00	FT.	13.00	FT.	13.00	FT.
3	1/2" Dia. Bars	13.00	Vertical in Deck	13.00	FT.	13.00	FT.	13.00	FT.
4	1/2" Dia. Bars	13.00	Vertical in Deck	13.00	FT.	13.00	FT.	13.00	FT.
5	1/2" Dia. Bars	13.00	Vertical in Deck	13.00	FT.	13.00	FT.	13.00	FT.
6	1/2" Dia. Bars	13.00	Vertical in Deck	13.00	FT.	13.00	FT.	13.00	FT.
7	1/2" Dia. Bars	13.00	Vertical in Deck	13.00	FT.	13.00	FT.	13.00	FT.
8	1/2" Dia. Bars	13.00	Vertical in Deck	13.00	FT.	13.00	FT.	13.00	FT.
9	1/2" Dia. Bars	13.00	Vertical in Deck	13.00	FT.	13.00	FT.	13.00	FT.
10	1/2" Dia. Bars	13.00	Vertical in Deck	13.00	FT.	13.00	FT.	13.00	FT.
11	1/2" Dia. Bars	13.00	Vertical in Deck	13.00	FT.	13.00	FT.	13.00	FT.
12	1/2" Dia. Bars	13.00	Vertical in Deck	13.00	FT.	13.00	FT.	13.00	FT.
13	1/2" Dia. Bars	13.00	Vertical in Deck	13.00	FT.	13.00	FT.	13.00	FT.
14	1/2" Dia. Bars	13.00	Vertical in Deck	13.00	FT.	13.00	FT.	13.00	FT.
15	1/2" Dia. Bars	13.00	Vertical in Deck	13.00	FT.	13.00	FT.	13.00	FT.
16	1/2" Dia. Bars	13.00	Vertical in Deck	13.00	FT.	13.00	FT.	13.00	FT.
17	1/2" Dia. Bars	13.00	Vertical in Deck	13.00	FT.	13.00	FT.	13.00	FT.
18	1/2" Dia. Bars	13.00	Vertical in Deck	13.00	FT.	13.00	FT.	13.00	FT.
19	1/2" Dia. Bars	13.00	Vertical in Deck	13.00	FT.	13.00	FT.	13.00	FT.
20	1/2" Dia. Bars	13.00	Vertical in Deck	13.00	FT.	13.00	FT.	13.00	FT.
21	1/2" Dia. Bars	13.00	Vertical in Deck	13.00	FT.	13.00	FT.	13.00	FT.
22	1/2" Dia. Bars	13.00	Vertical in Deck	13.00	FT.	13.00	FT.	13.00	FT.
23	1/2" Dia. Bars	13.00	Vertical in Deck	13.00	FT.	13.00	FT.	13.00	FT.
24	1/2" Dia. Bars	13.00	Vertical in Deck	13.00	FT.	13.00	FT.	13.00	FT.
25	1/2" Dia. Bars	13.00	Vertical in Deck	13.00	FT.	13.00	FT.	13.00	FT.
26	1/2" Dia. Bars	13.00	Vertical in Deck	13.00	FT.	13.00	FT.	13.00	FT.
27	1/2" Dia. Bars	13.00	Vertical in Deck	13.00	FT.	13.00	FT.	13.00	FT.
28	1/2" Dia. Bars	13.00	Vertical in Deck	13.00	FT.	13.00	FT.	13.00	FT.
29	1/2" Dia. Bars	13.00	Vertical in Deck	13.00	FT.	13.00	FT.	13.00	FT.
30	1/2" Dia. Bars	13.00	Vertical in Deck	13.00	FT.	13.00	FT.	13.00	FT.
31	1/2" Dia. Bars	13.00	Vertical in Deck	13.00	FT.	13.00	FT.	13.00	FT.
32	1/2" Dia. Bars	13.00	Vertical in Deck	13.00	FT.	13.00	FT.	13.00	FT.
33	1/2" Dia. Bars	13.00	Vertical in Deck	13.00	FT.	13.00	FT.	13.00	FT.
34	1/2" Dia. Bars	13.00	Vertical in Deck	13.00	FT.	13.00	FT.	13.00	FT.
35	1/2" Dia. Bars	13.00	Vertical in Deck	13.00	FT.	13.00	FT.	13.00	FT.
36	1/2" Dia. Bars	13.00	Vertical in Deck	13.00	FT.	13.00	FT.	13.00	FT.
37	1/2" Dia. Bars	13.00	Vertical in Deck	13.00	FT.	13.00	FT.	13.00	FT.
38	1/2" Dia. Bars	13.00	Vertical in Deck	13.00	FT.	13.00	FT.	13.00	FT.
39	1/2" Dia. Bars	13.00	Vertical in Deck	13.00	FT.	13.00	FT.	13.00	FT.
40	1/2" Dia. Bars	13.00	Vertical in Deck	13.00	FT.	13.00	FT.	13.00	FT.

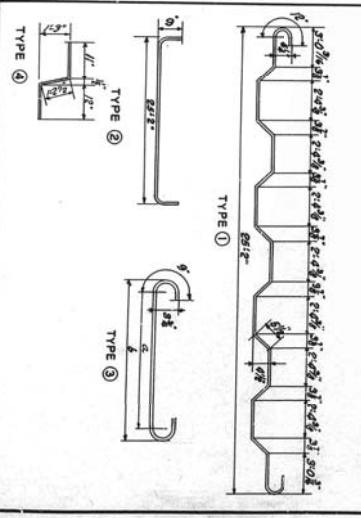
Bridge over Little Sandy River  
COMMONWEALTH OF KENTUCKY  
DEPARTMENT OF HIGHWAYS  
FRANKFORT  
COUNTY OF  
**CARTER**  
GRAYSON-SANDY HOOK  
ROAD  
PROJECT NO. 5724  
STATES 2017 P. 01.765  
BRIDGE NUMBER  
NO. 56.55

DESIGNED BY	HECKER	CHECKED BY	J.M.D.	DATE	
REVISION					
DATE					
TRACED BY	Gibbs	APPROVED BY		DATE	1-1-11



022B00017N

BILL OF REINFORCEMENT (TOTAL)			
MARK	TYPE	NO	SIZE
G.1	①	244	#3
G.2	②	472	#3
G.3	③	128	#3
G.4	④	391	#3
G.5			

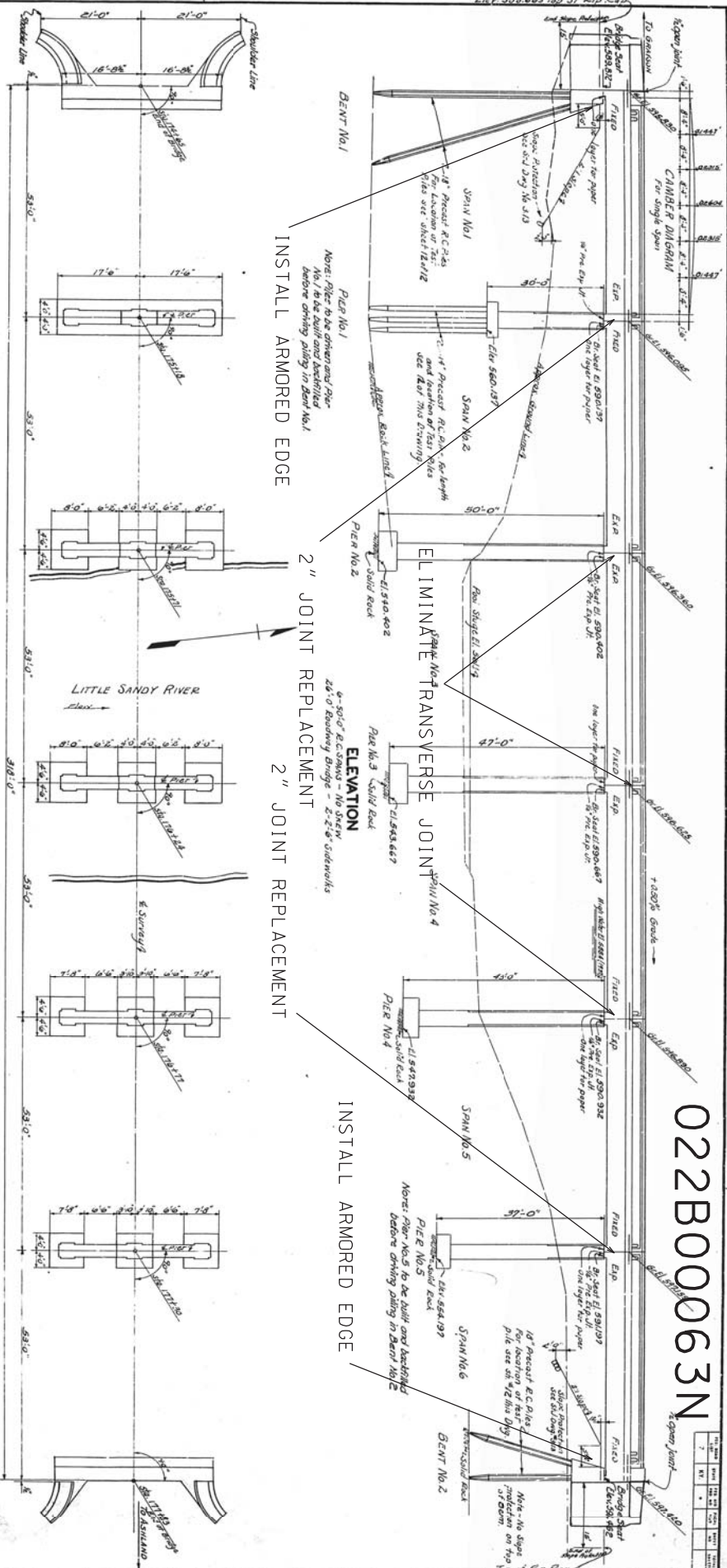


ESTIMATE OF QUANTITIES  
Concrete Class # 1943 C-100  
Reinforcement 29490 Lbs.

SLABS

Bridge over Little Sandy River Sheet 19  
COMMONWEALTH OF KENTUCKY  
DEPARTMENT OF HIGHWAYS  
COUNTY OF  
**CARTER**  
GRAYSON-SANDY HOOK ROAD  
STATION 2107+01.796  
PROJECT NO. 572.68(3)  
BRIDGE NUMBER  
NO. 8164

DESIGNED BY *E. V. Johnson, Jr.* CHECKED BY *E. V. Johnson, Jr.* DATE *11/24/24*  
 TRACED BY *E. V. Johnson, Jr.* CHECKED BY *E. V. Johnson, Jr.* DATE  
 REVISED *Camber diagram* E.V.Jr. DATE *11/24/24*  
 REVISED DATE  
 REVISED DATE



**REFERENCES - ESTIMATE OF QUANTITIES**

ITEM	QTY	UNIT	AMOUNT	TOTAL
CONCRETE	1724	cu yd	1724	1724
STEEL	11	tons	11	11
SPAN 1	1	span	1	1
PIER 1	1	pier	1	1
PIER 2	1	pier	1	1
PIER 3	1	pier	1	1
PIER 4	1	pier	1	1
PIER 5	1	pier	1	1
PIER 6	1	pier	1	1
TOTALS	1724		1724	1724

**BILL OF INCIDENTAL MATERIAL**

ITEM	QTY	UNIT	AMOUNT	TOTAL
Formwork	1724	sq ft	1724	1724
Reinforcing Bars	11	tons	11	11
SPAN 1	1	span	1	1
PIER 1	1	pier	1	1
PIER 2	1	pier	1	1
PIER 3	1	pier	1	1
PIER 4	1	pier	1	1
PIER 5	1	pier	1	1
PIER 6	1	pier	1	1
TOTALS	1724		1724	1724

**GENERAL NOTE**

See drawings for details. All dimensions are in feet and inches unless otherwise noted. Dimensions shown from face of concrete to bars are clear distances except as otherwise shown. Dimensions for bar spacing are distances center to center of bars. See Emergency Provision No. 10.

**Details:** All exposed edges shall be finished by rubbing with No. 20 sandpaper.

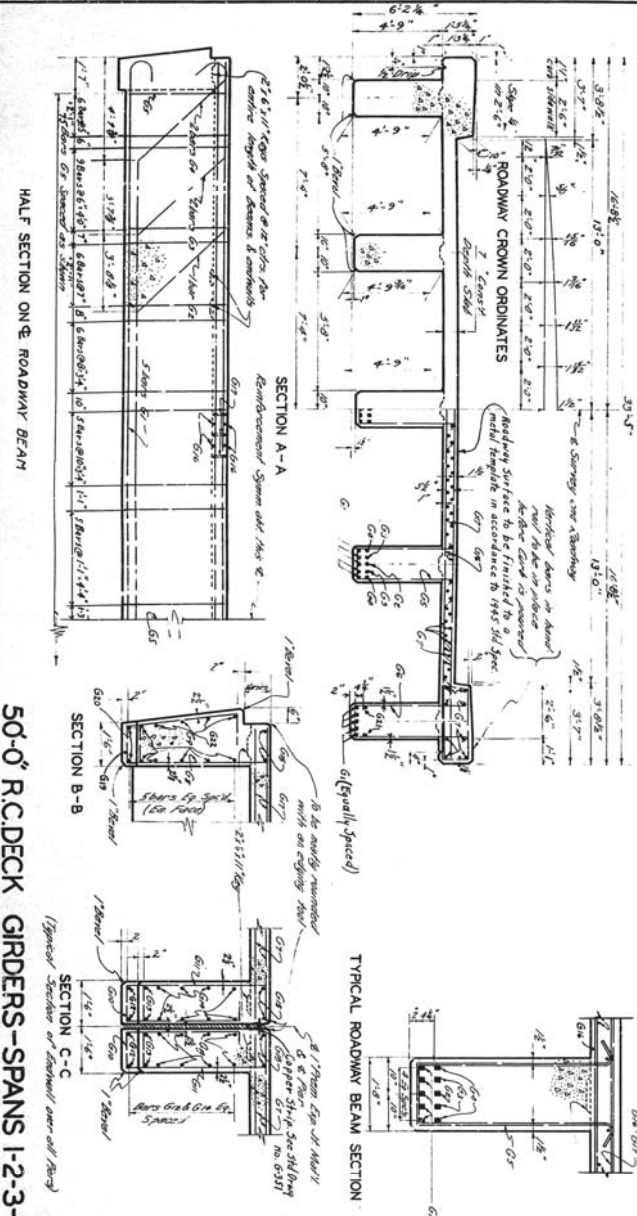
**Formwork:** Formwork shall be placed sufficiently in front and back of the forms to allow for a minimum of one inch clearance all around. Forms shall be braced to prevent buckling. Formwork shall be braced to prevent buckling.

**Reinforcing Bars:** Reinforcing bars shall be placed in accordance with the specifications and drawings. All bars shall be lapped in accordance with the specifications and drawings.

**COMMONWEALTH OF KENTUCKY**  
 DEPARTMENT OF HIGHWAYS  
 PROJECT NO. **CARTER - ASHLAND**  
 STATION **1724-1**  
 PROJECT NO. **22-248-1**  
 SHEET **1724-1**

022B00063N

DESIGNED BY: <i>J. O. Smith</i>	CHECKED BY: <i>A. Deery</i>	DATE: <i>5-12</i>	REVISION:	DATE:
DETAILED BY: <i>J. O. Smith</i>	CHECKED BY: <i>A. Deery</i>	DATE: <i>5-12</i>	REVISION:	DATE:
TRACED BY: <i>J. O. Smith</i>	CHECKED BY: <i>A. Deery</i>	DATE: <i>5-12</i>	REVISION:	DATE:



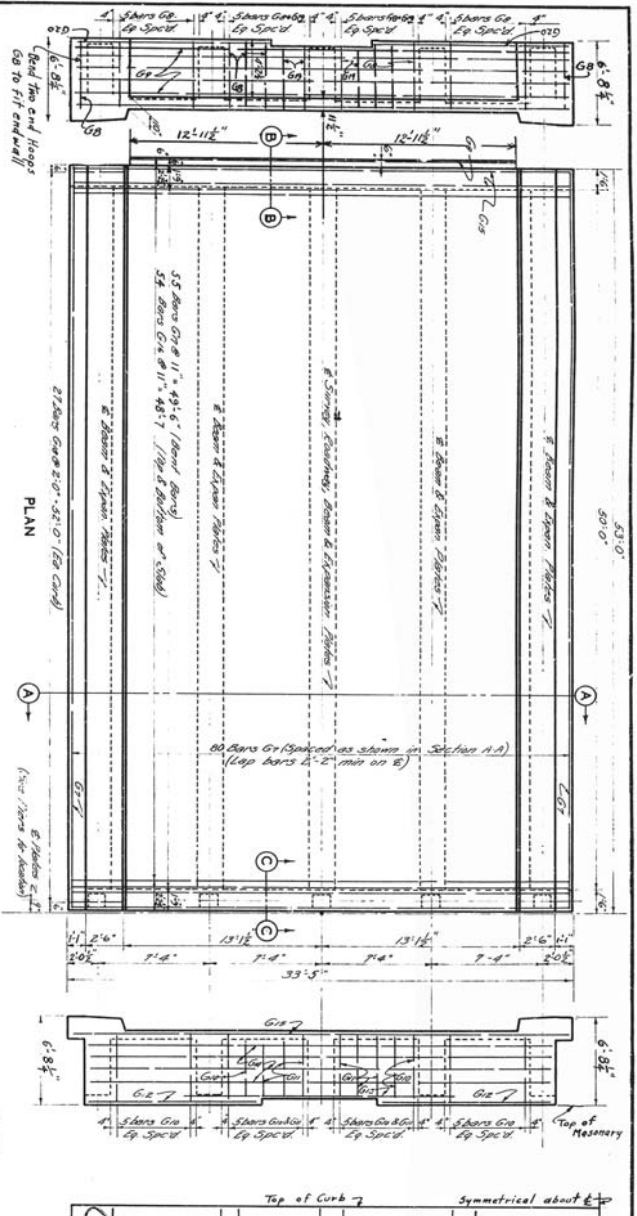
**ESTIMATE OF QUANTITIES**

Concrete Class 2" 32M 1	1438 Cu Yds
Reinforcement 32M 1	27380 Lbs
Concrete Class 2" 32M 2	141.9 Cu Yds
Reinforcement 32M 2	27360 Lbs
Concrete Class 2" 32M 3	141.9 Cu Yds
Reinforcement 32M 3	27360 Lbs
Concrete Class 2" 32M 4	141.9 Cu Yds
Reinforcement 32M 4	27360 Lbs
Concrete Class 2" 32M 5	141.9 Cu Yds
Reinforcement 32M 5	27360 Lbs
Concrete Class 2" 32M 6	1438 Cu Yds
Reinforcement 32M 6	27380 Lbs

**COMMONWEALTH OF KENTUCKY**  
DEPARTMENT OF HIGHWAYS  
KENTUCKY TRANSPORTATION COMMISSION  
CARTER  
GRAYSON-ASHLAND

BRIDGE OVER LITTLE SANDY RIVER  
STREET 9 OF 12  
STATION 176+24  
PROJECT NO. 8256

Scale: 1/4" = 1'-0"



**BILL OF REINFORCEMENT**

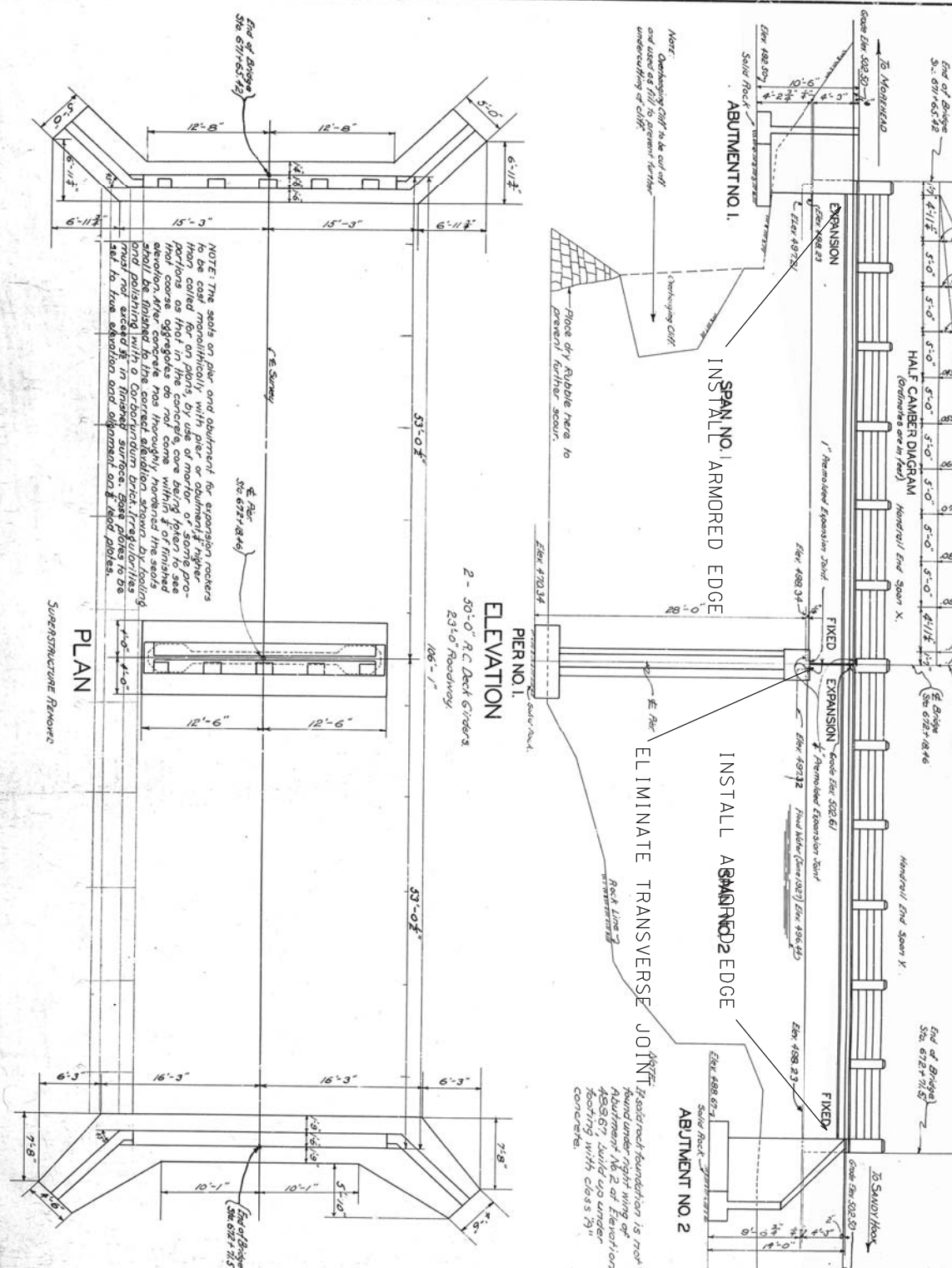
Item	Quantity	Unit	Location
1	1438	Cu Yds	Concrete Class 2" 32M 1
2	27380	Lbs	Reinforcement 32M 1
3	141.9	Cu Yds	Concrete Class 2" 32M 2
4	27360	Lbs	Reinforcement 32M 2
5	141.9	Cu Yds	Concrete Class 2" 32M 3
6	27360	Lbs	Reinforcement 32M 3
7	141.9	Cu Yds	Concrete Class 2" 32M 4
8	27360	Lbs	Reinforcement 32M 4
9	141.9	Cu Yds	Concrete Class 2" 32M 5
10	27360	Lbs	Reinforcement 32M 5
11	1438	Cu Yds	Concrete Class 2" 32M 6
12	27380	Lbs	Reinforcement 32M 6

022B00063N



032B00006N

DESIGNED BY	A.E. Bloesch	DATE	3/25/02
CHECKED BY	J.J.A.	DATE	5-22-02

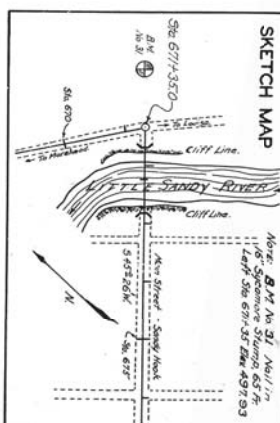


NOTE: The soils on pier and abutment for expansion rockers to be cast monolithically with pier or abutment. However, they may be cast in place, by use of mortar or some proportion as that in the concrete, care being taken to see that the coarse aggregates do not come within 3" of finished surface. The rockers should be roughly honed in the field and polished with a Carborundum brick. The roller should not exceed 1/2" in finished surface. Gate plates to be cast to true elevation and alignment on field plates.

NOTE: Rocker foundation is not found under right wing of Abutment No. 2 of Elevation 489.67. Build up under footing with class 79" concrete.

**REFERENCES**

For details of 30'-0" RC Deck over Spans see Sheet 2 of 4.  
For details of 20'-6" RC Abutment No. 1, see Sheet 3 of 4.  
For details of 20'-6" RC Abutment No. 2, see Standard Drawing No. A-59.  
For details of Abutment see Standard Drawing No. 17-B.



**GENERAL NOTE**

**STRUCTURE:**  
State Highway Department, Kentucky, 1930.  
Class 1 concrete to be used throughout unless otherwise specified.  
Class 2 concrete to be used in Beams, Columns and Sills.  
Class 3 concrete to be used in Handrail and posts.  
All dimensions from face of concrete to steel, unless otherwise specified.  
Clearances from centerline of deck to clearances from centerline of deck shall be as shown on drawings.  
Clearances from centerline of deck to clearances from centerline of deck shall be as shown on drawings.  
Clearances from centerline of deck to clearances from centerline of deck shall be as shown on drawings.

**TOTAL ESTIMATE OF QUANTITIES**

Concrete Class 1 (in Substructure)	125.9	Cu/yds
Concrete Class 2 (in Superstructure)	45.2	Cu/yds
Reinforcement	2029	Lbs.
Cast Steel	59510.	Lbs.
Forged Steel	244.	Lbs.
Expansion (27 Rock)	100	Cu/yds
Excavation (71 Common)	40	Cu/yds
Excavation (17 Common)	40	Cu/yds
Dry Rubble Masonry	40	Cu/yds

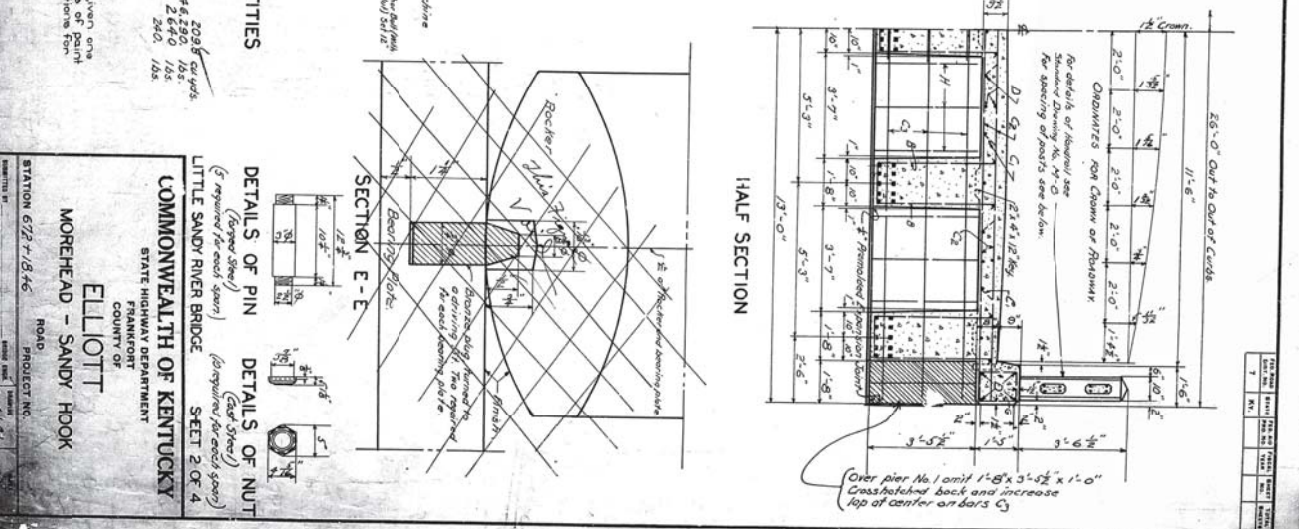
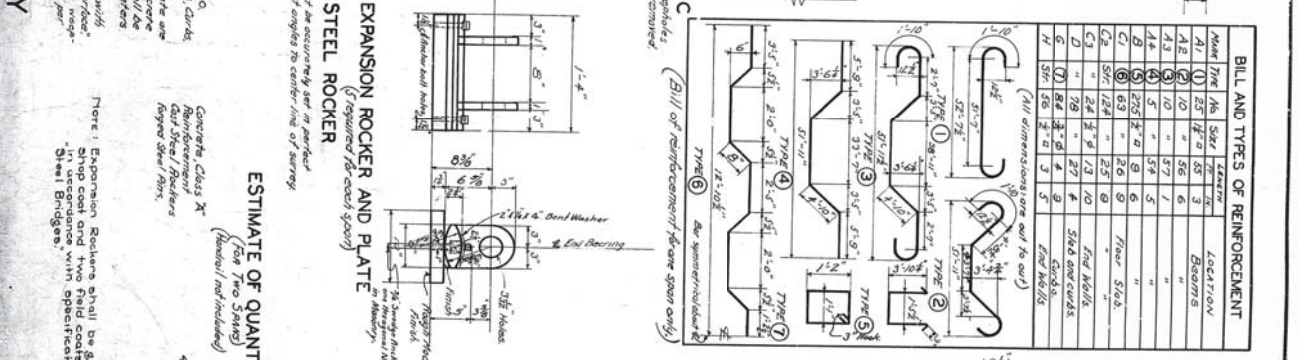
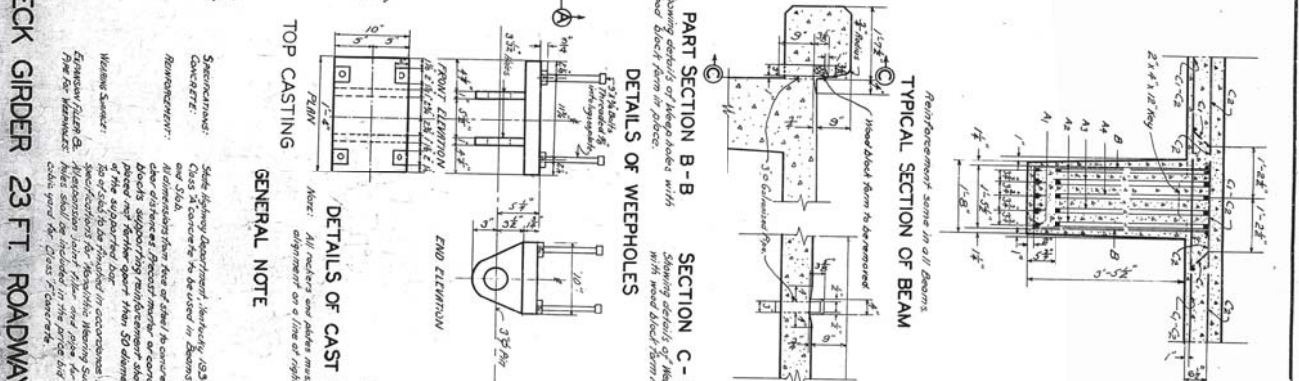
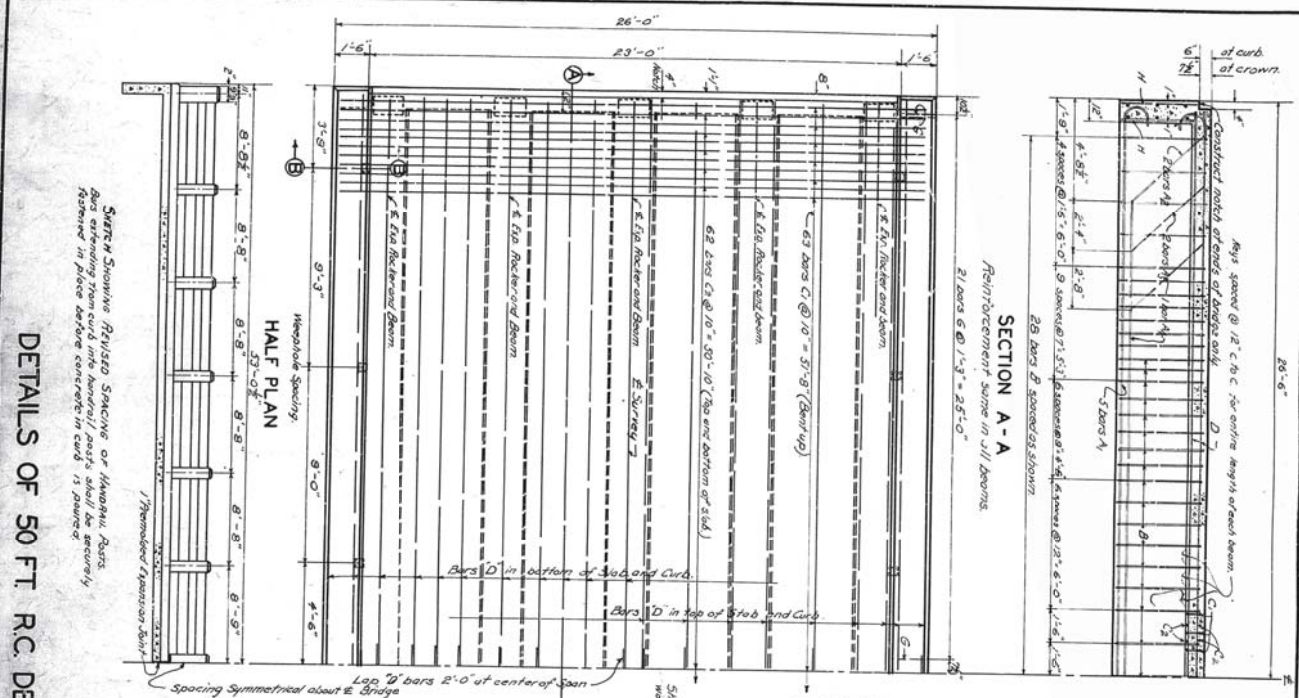
**COMMONWEALTH OF KENTUCKY**  
STATE HIGHWAY DEPARTMENT

PROJECT NO. 6727-B-46  
ROAD SANDY HOOK  
COUNTY OF...  
SHEET 1 OF 4

LITTLE SANDY RIVER BRIDGE

101.25.9833

DESIGNED BY C.K.H.	DATE 10/10/03	REVIEWED DATE
TRACED BY D.E. R...	DATE 10/10/03	REVIEWED DATE
CHECKED BY W.S. Todd	DATE 10/10/03	REVIEWED DATE



START SHOWING REINFORCED STAINLESS OR INVARIAL BARS  
REMOVED IN PLACE BEFORE CONCRETE IN CASE IS ORDERED

DETAILS OF 50 FT R.C. DECK GIRDER 23 FT ROADWAY

**GENERAL NOTE**  
Note: All rockers and plates must be accurately set in perfect alignment on a line of sight angles to center line of survey.

**ESTIMATE OF QUANTITIES**

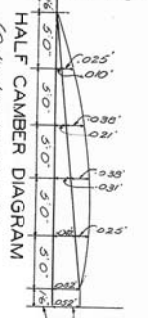
ITEM	QUANTITY	UNIT	PRICE	TOTAL
Concrete, Class X	2096	cu yds	46.290	195.2
Reinforcement, Mild Steel	2640	lbs	2.40	195.2
Expansion Rockers	2	each	240.00	480.00
Cast Steel Plates	2	each	195.00	390.00

**DETAILS OF PIN**  
**DETAILS OF NUT**  
**COMMONWEALTH OF KENTUCKY**  
STATE HIGHWAY DEPARTMENT  
FRANKFORT  
COUNTY OF  
**ELLIOTT**  
MOREHEAD - SANDY HOOK  
ROAD  
PROJECT NO. 6127-1846  
DATE: 10/10/03

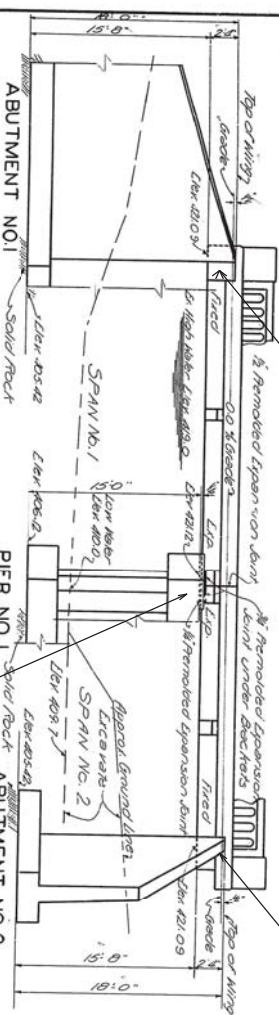
032B00006N

**REFERENCES**

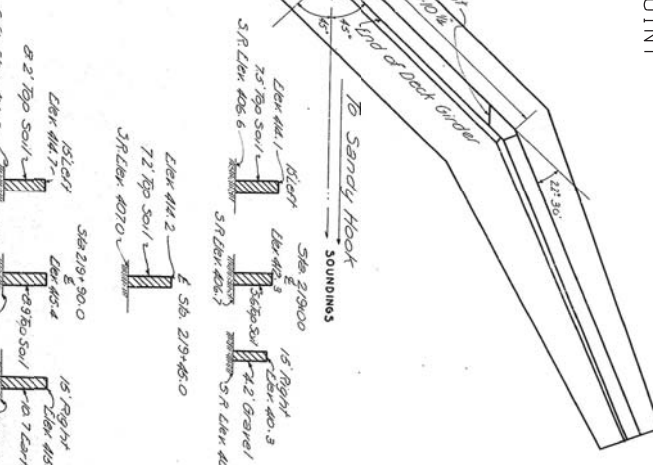
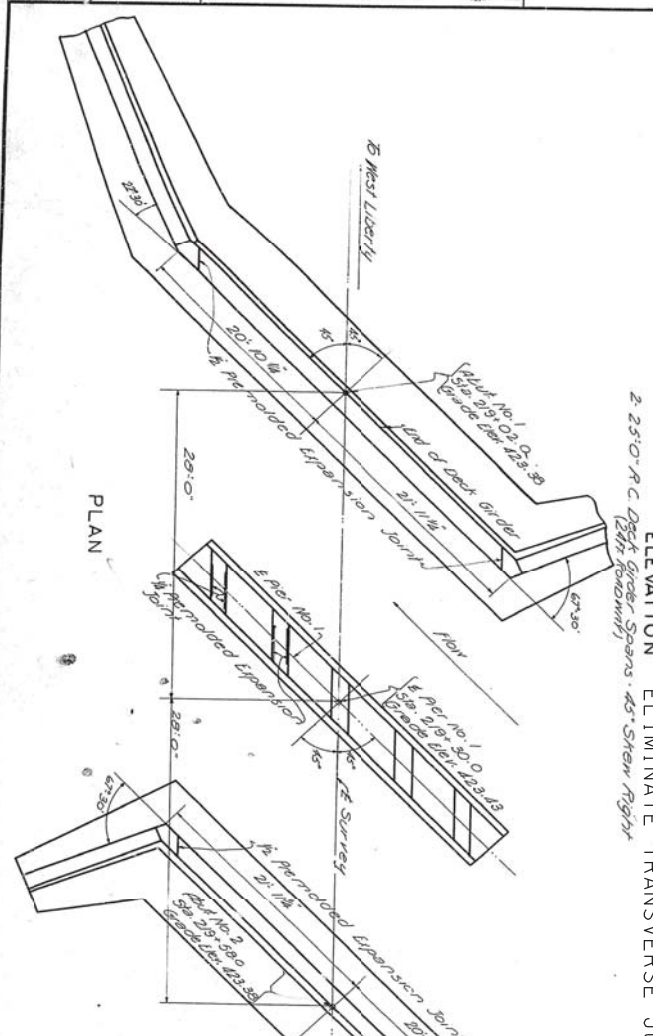
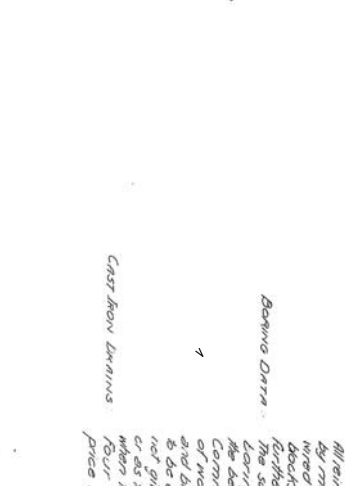
For details of 15'C R.C. Abutments Nos 1 & 2, 45° Skew Right, see Standard Drawing No. A-236 (2 SHEETS)  
For details of 15'C R.C. Pier No. 1, 45° Skew Right, see Standard Drawing No. A-111, A-120  
For details of 25'0" R.C. Deck Girder Spans, 45° Skew Right, see Standard Drawing No. G-227  
For details of C.I. Drains see Standard Drawing No. H-11  
For details of coping slabs and precasted expansion joint material see Standard Drawing No. G-251



**INSTALL ARMORED EDGE**



**INSTALL ARMORED EDGE**



**GENERAL NOTE**

Specimens: State Highway Department, Kentucky, (1932 Standard with subsequent adopted amendments)  
Class 'X' concrete to be used throughout except in Abutment and Piers  
Class 'D' concrete to be used in Abutment and Piers  
The design of concrete to be determined by the State Highway Commission as to conditions existing at the time of work. This data is furnished for information only and bidders must draw their own conclusions as to conditions to be encountered. The State Highway Commission does not give any guarantee as to the accuracy of data furnished or as to conditions which will actually be found to exist when the work is being executed.  
Four Cast Iron Laminas required each to be included in price bid for Class 'X' concrete.

**TOTAL ESTIMATE OF QUANTITIES**

Concrete Class 'X'	368.9 cu yds.
Concrete Class 'D'	70 cu yds.
Reinforcement	57630 lbs.
Structure Encasement (Unfinished)	900 sq. yds.
Encasement (Change)	See Read Plans

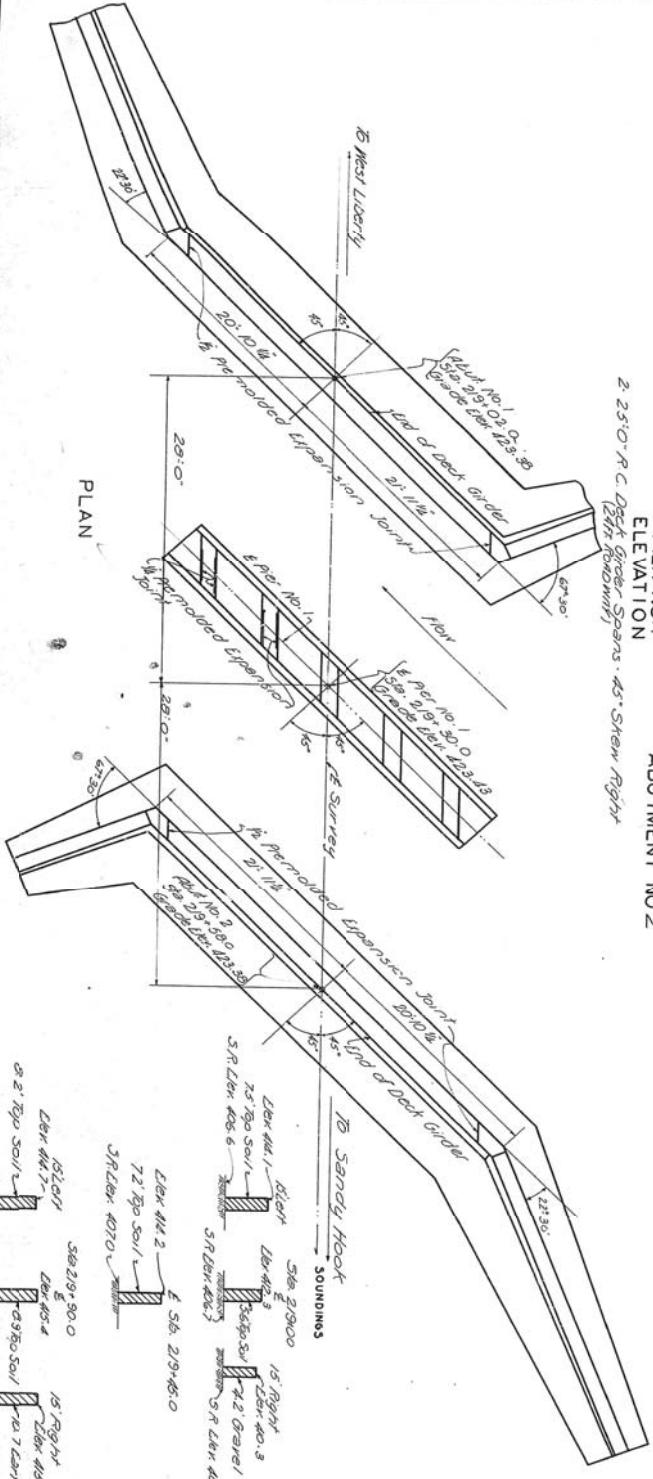
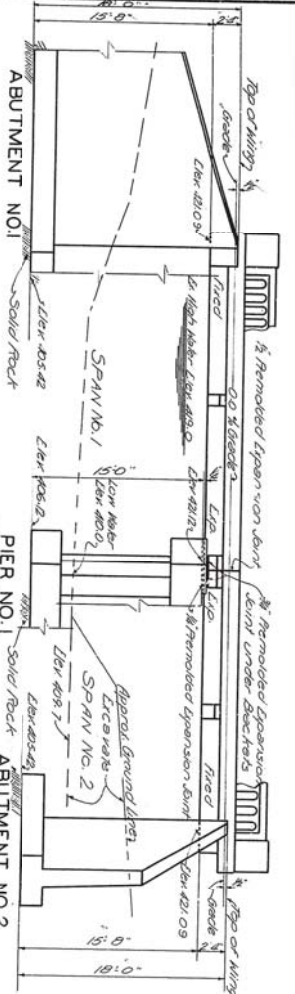
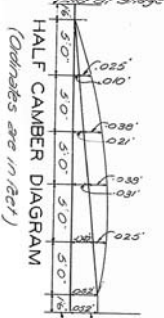
Bridge over Dobb's Branch  
**COMMONWEALTH OF KENTUCKY**  
STATE HIGHWAY DEPARTMENT  
COUNTY OF  
**ELLIOTT**  
**WEST LIBERTY - SANDY HOOK**  
ROAD PROJECT NO.  
STATION 219+30.0  
DATE JUL 25 1968  
6-302

NICHOLAS - CARTER, ELLIOTT, FLEMING COUNTIES  
121GR17M072 - FE02  
DESIGNED BY J. J. Thomas DATE 6-23-68  
CHECKED BY L. P. Wright DATE 7-23-68  
CREATED BY L. Vaughan Jr. DATE 5/1/68

DESIGNED BY	DATE	REVIEWED	DATE
BY <i>L. J. Vaughan, Jr.</i>	8/25/88	BY <i>L. J. Vaughan, Jr.</i>	8/25/88
CHECKED BY	DATE	REVIEWED	DATE
BY <i>L. J. Vaughan, Jr.</i>	8/25/88	BY <i>L. J. Vaughan, Jr.</i>	8/25/88

**REFERENCES**

For details of R.C. Abutments Nos. 1 & 2, 45° Skew Right, see Standard Drawing No. F-2-36 (2 SHEETS)  
 For details of R.C. Pier No. 1, 45° Skew Right, see Standard Drawing No. F-111, F-120  
 For details of 25'0" R.C. Deck Girder Span, 45° Skew Right, see Standard Drawing No. G-227  
 For details of C.I. Drains see Standard Drawing No. H-11  
 For details of copper strips and remodeled expansion joint material see Standard Drawing No. G-200



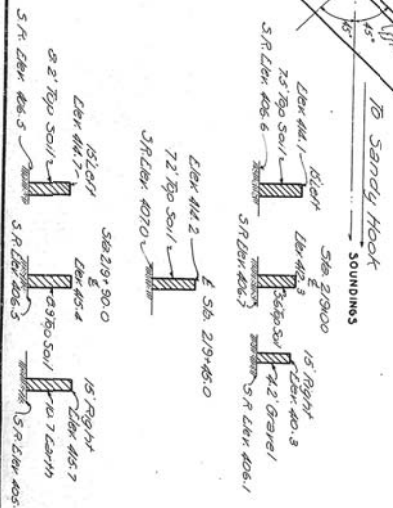
**GENERAL NOTE**

**SPECIFICATIONS:** State Highway Department, Kentucky, (1932 Standard with subsequent additions) generally and Class 'F' concrete to be used throughout except in Item 11 and 12.

**STILL REINFORCEMENT:** To be determined by dimension shown on face of concrete is the clear distance. Dimensions shown on face of concrete shall be secured by means of a corner to corner wire of all intersections. Precast member or concrete deck supporting reinforcement shall be spaced not further apart than 30 diameters of the specified bar. Reinforcement data shown hereon was obtained by the contractor's calculations and approved by the State Highway Commission. Conditions existing at the site and bidders must determine their own conditions as to conditions to be encountered. The State Highway Commission does not give any guarantee as to the accuracy of data furnished when the work is being executed. Four cast iron drains required curb to be included in price bid for Class 'F' concrete.

**TOTAL ESTIMATE OF QUANTITIES**

Concrete Class 'F'	363.3 cu. yds.
Concrete Class 'D'	70 cu. yds.
Reinforcement	576.30 lbs.
Structure Excavation (Unexcavated) 900 cu. yds.	
Excavation (Channel Change)	See Road Plans



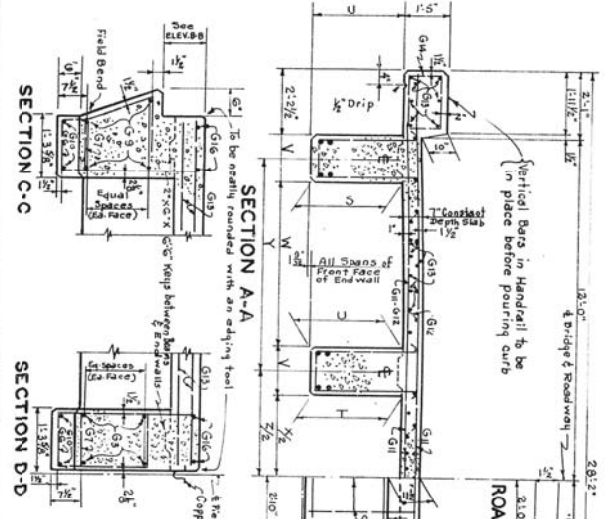
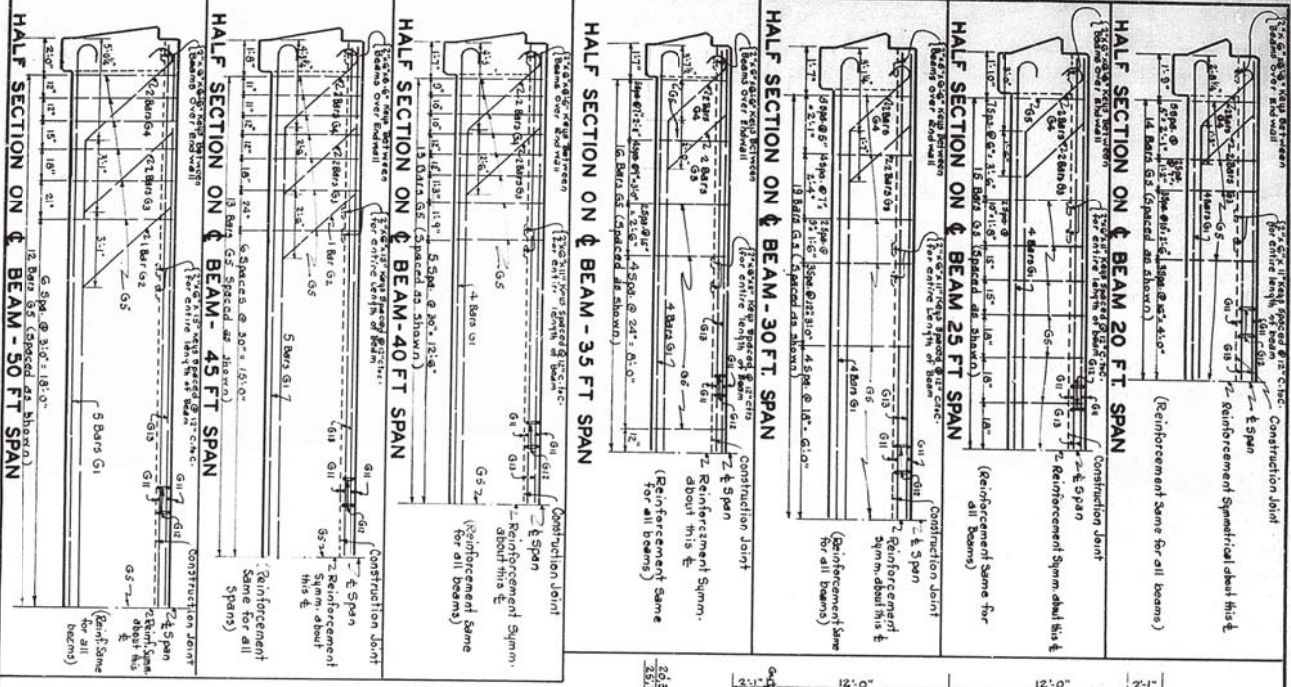
Bridge over Dobb's Branch  
**COMMONWEALTH OF KENTUCKY**  
 STATE HIGHWAY DEPARTMENT  
 DISTRICT OF  
**ELLIOTT**  
 WEST LIBERTY - SANDY HOOK  
 STATION 297+30.0 ROAD PROJECT NO. 6302

032B00007N

JUL 25 1988

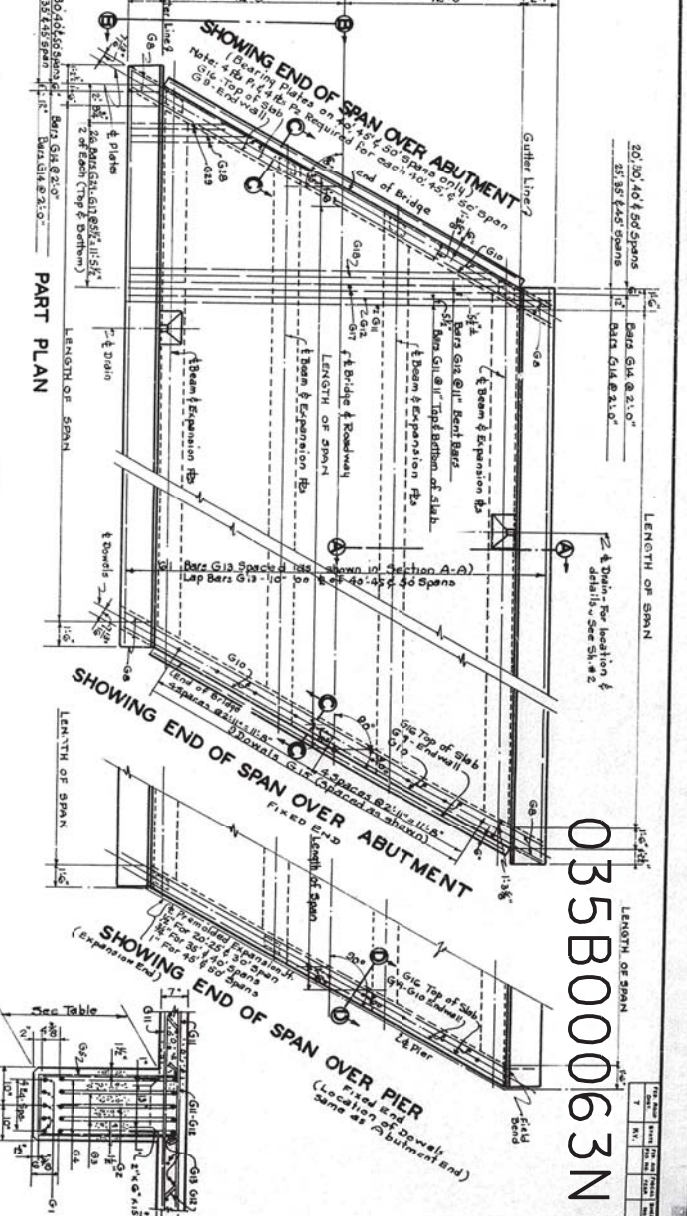


DESIGNED BY	J.M.	DATE	10/12/17
CHECKED BY	ER.S.	DATE	2/1/18



**TABLE OF DIMENSIONS**

Span	1	2	3	4	5	6	7	8	9	10	11	12	13	14	15	16	17	18	19	20	
Span	1	2	3	4	5	6	7	8	9	10	11	12	13	14	15	16	17	18	19	20	
Length of Span	20.0	25.0	30.0	35.0	40.0	45.0	50.0	55.0	60.0	65.0	70.0	75.0	80.0	85.0	90.0	95.0	100.0	105.0	110.0	115.0	
Beam Depth	48"	48"	48"	48"	48"	48"	48"	48"	48"	48"	48"	48"	48"	48"	48"	48"	48"	48"	48"	48"	48"
Beam Spacing	12.0'	12.5'	13.0'	13.5'	14.0'	14.5'	15.0'	15.5'	16.0'	16.5'	17.0'	17.5'	18.0'	18.5'	19.0'	19.5'	20.0'	20.5'	21.0'	21.5'	22.0'
Beam Spacing (ft)	12.0	12.5	13.0	13.5	14.0	14.5	15.0	15.5	16.0	16.5	17.0	17.5	18.0	18.5	19.0	19.5	20.0	20.5	21.0	21.5	22.0



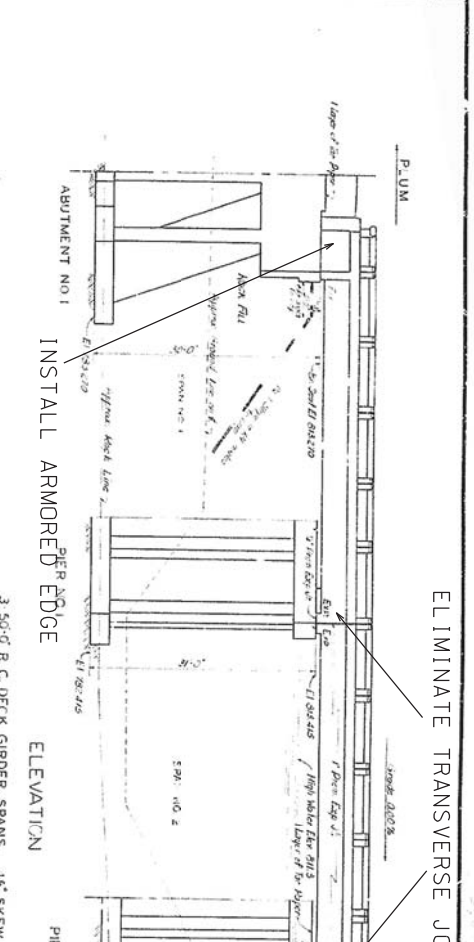
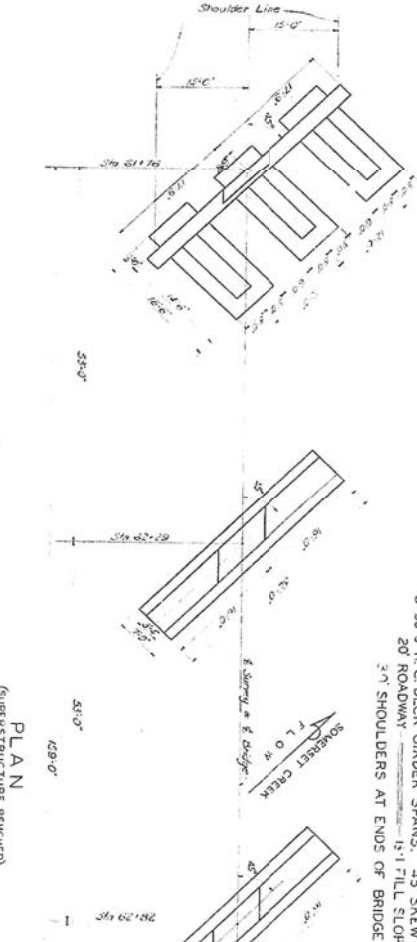
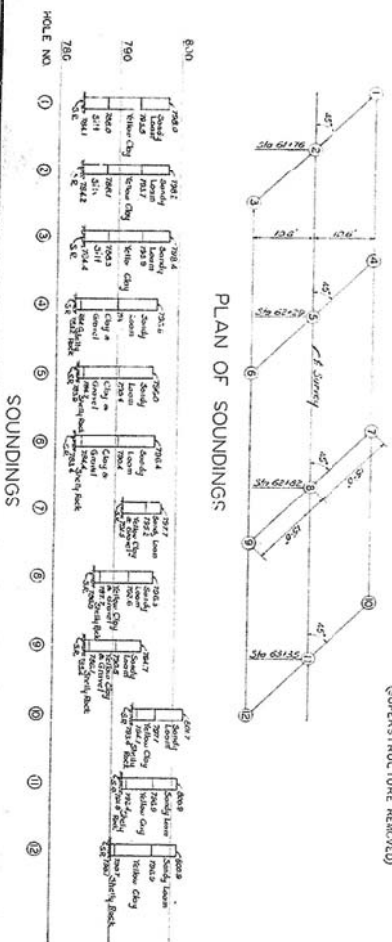
**COMMONWEALTH OF KENTUCKY**  
DEPARTMENT OF HIGHWAYS

**STANDARD CONCRETE BRIDGE DECK GIRDERS**  
30° SKEW 24 FT. ROADWAY SPANS 20 TO 50'

Sheet 1 of 2  
G.548

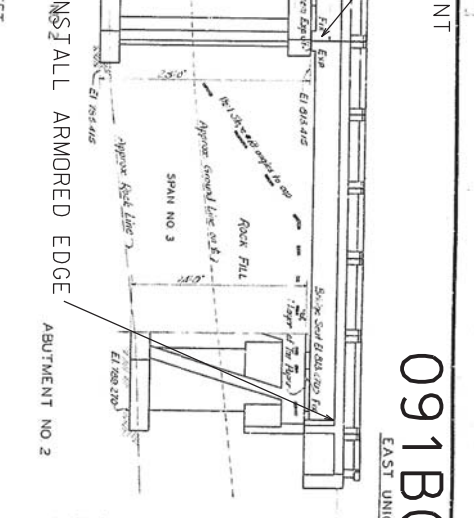
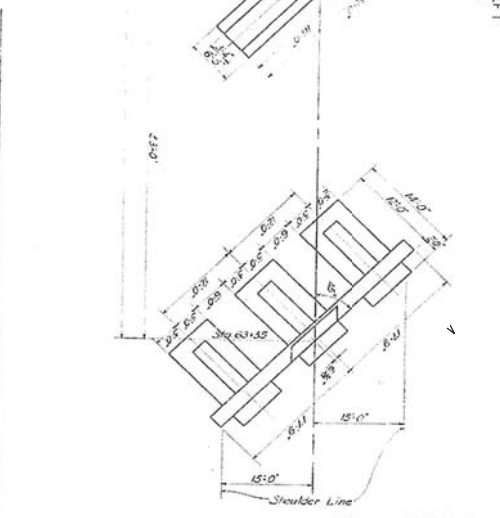
035B00063N

DESIGNED BY: <i>AKC</i>	CHECKED BY: <i>AKC</i>	DATE: <i>2-2-00</i>	REVIEWED:	DATE:
DRAWN BY: <i>AKC</i>	CHECKED BY: <i>AKC</i>	DATE: <i>2-2-00</i>	REVIEWED:	DATE:
TRACED BY:	CHECKED BY:	DATE:	REVIEWED:	DATE:



REFERENCES AND ESTIMATE OF QUANTITIES

ITEM	QUANTITY	UNIT	ESTIMATE	UNIT PRICE	TOTAL
Abutment No. 1	1	sq. ft.	10857	275	2983
Pier No. 1	1	sq. ft.	4620	160	740
Pier No. 2	1	sq. ft.	6031	100	603
Abutment No. 2	1	sq. ft.	8352	160	1336
Span No. 1	3	sq. ft.	17836	40	713
Span No. 2	2	sq. ft.	16502	304	4996
Span No. 3	2	sq. ft.	17636	304	5361
Foundations	5	sq. ft.			
Retentions	1	sq. ft.			
Concrete	1	cu. yd.			
Steel	1	lb.			
Other Materials	1	lb.			
W/1953	1	lb.			
TOTAL			53882	6.7	361722
			685	125	85625
					447



BRIDGE OVER SORENET CREEK  
COMMONWEALTH OF KENTUCKY  
DEPARTMENT OF HIGHWAYS  
FLEMING COUNTY  
NICHOLAS  
PLUM - EAST UNION  
STATION 62+55.5  
PROJECT NO. 5375(0)  
ROAD PROJECT NO. 5375(0)  
SHEET 1 OF 5  
P 110

GENERAL NOTE

1. Specifications for this bridge are detailed in A.S. & D. Specifications for Highway Bridges, 19th Edition, published by the American Institute of Steel Construction, Inc., Chicago, Illinois.

2. Concrete shall be placed in the form and compacted in place. It shall be cured and protected from frost and freezing temperatures.

3. Steel shall be placed in the form and compacted in place. It shall be protected from rust and corrosion.

4. The contractor shall be responsible for obtaining all necessary permits and approvals from the appropriate authorities.

5. The contractor shall be responsible for the safety of the construction site and the surrounding area.

6. The contractor shall be responsible for the disposal of all waste materials.

7. The contractor shall be responsible for the maintenance of the bridge during construction.

8. The contractor shall be responsible for the completion of the bridge within the specified time frame.

9. The contractor shall be responsible for the payment of all taxes and fees.

10. The contractor shall be responsible for the insurance of the bridge and the construction site.

BILL OF INCIDENTAL MATERIAL

ITEM	NO.	SIZE AND DESCRIPTION	LOCATION
1	1	1'-1.5" x 1'-1.5"	Between Spans
2	1	1'-1.5" x 1'-1.5"	Between Spans
3	1	1'-1.5" x 1'-1.5"	Between Spans
4	1	1'-1.5" x 1'-1.5"	Between Spans
5	1	1'-1.5" x 1'-1.5"	Between Spans
6	1	1'-1.5" x 1'-1.5"	Between Spans
7	1	1'-1.5" x 1'-1.5"	Between Spans
8	1	1'-1.5" x 1'-1.5"	Between Spans
9	1	1'-1.5" x 1'-1.5"	Between Spans
10	1	1'-1.5" x 1'-1.5"	Between Spans

DESIGNED BY: R.P. HALL	DATE: 12/15/11	REVISION:	DATE:
CHECKED BY: G. J. COOPER	DATE: 12/15/11	REVISION:	DATE:
APPROVED BY: G. J. COOPER	DATE: 12/15/11	REVISION:	DATE:

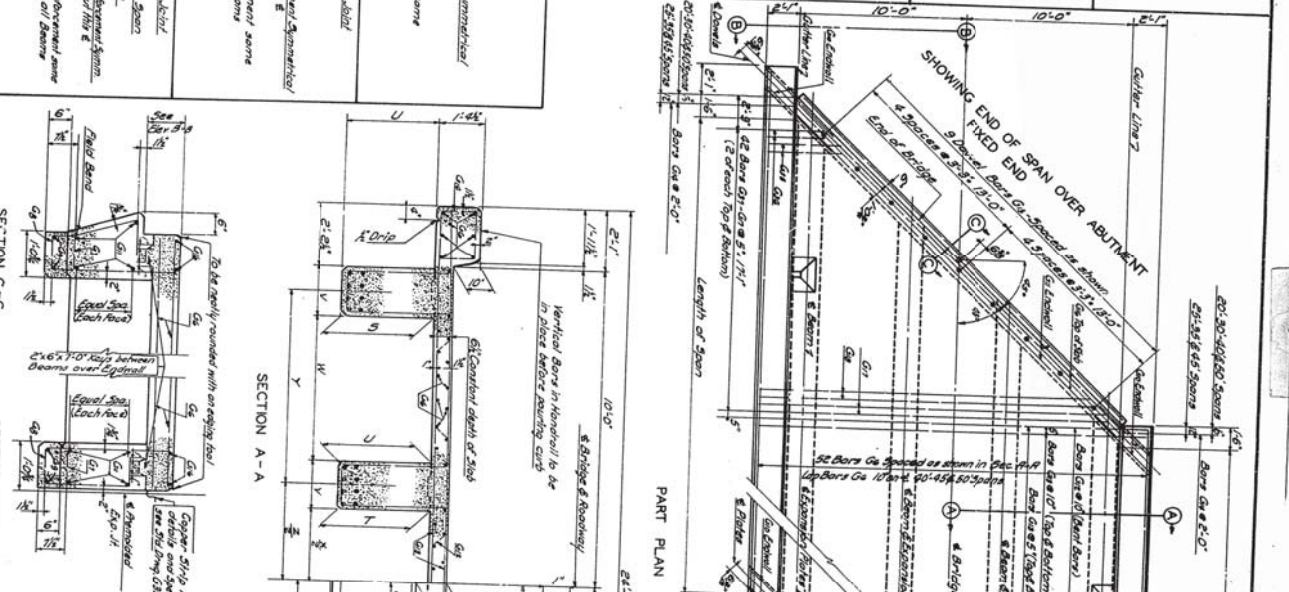
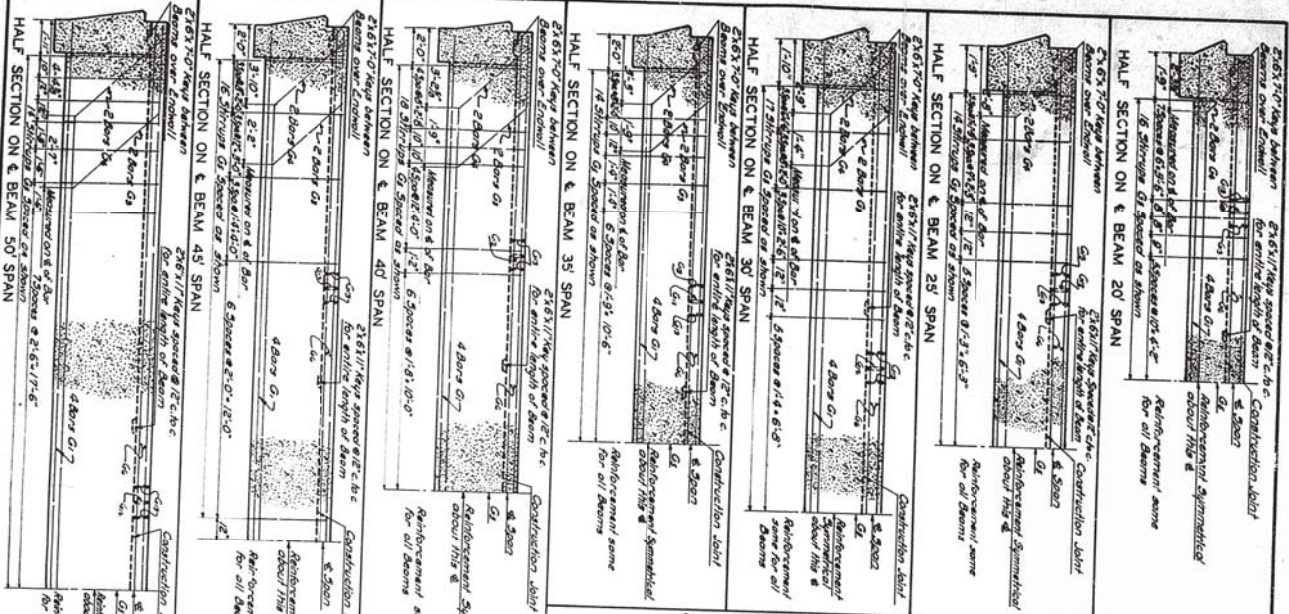
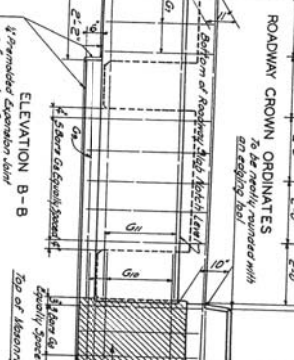


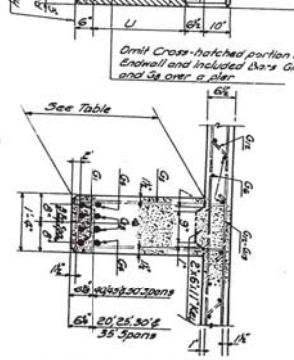
TABLE OF DIMENSIONS

SPAN	FIN	20 FT	25 FT	30 FT	35 FT	40 FT	45 FT	50 FT
1	1	1	1	1	1	1	1	1
2	2	2	2	2	2	2	2	2
3	3	3	3	3	3	3	3	3
4	4	4	4	4	4	4	4	4
5	5	5	5	5	5	5	5	5
6	6	6	6	6	6	6	6	6
7	7	7	7	7	7	7	7	7
8	8	8	8	8	8	8	8	8
9	9	9	9	9	9	9	9	9
10	10	10	10	10	10	10	10	10
11	11	11	11	11	11	11	11	11
12	12	12	12	12	12	12	12	12
13	13	13	13	13	13	13	13	13
14	14	14	14	14	14	14	14	14
15	15	15	15	15	15	15	15	15
16	16	16	16	16	16	16	16	16
17	17	17	17	17	17	17	17	17
18	18	18	18	18	18	18	18	18
19	19	19	19	19	19	19	19	19
20	20	20	20	20	20	20	20	20



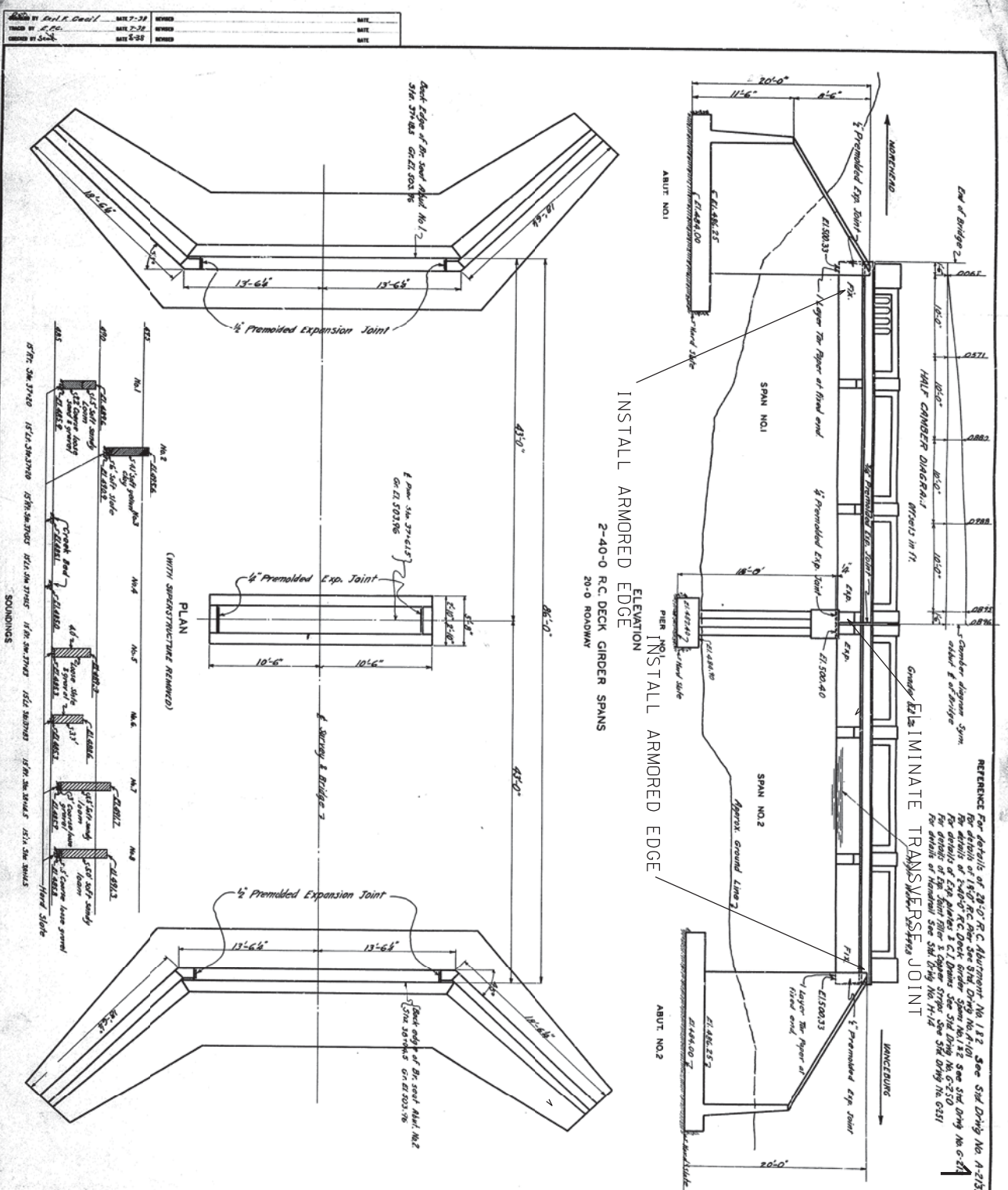
COMMONWEALTH OF KENTUCKY  
DEPARTMENT OF HIGHWAYS  
STANDARD CONCRETE BRIDGE  
DECK GIRDERS  
45° SKEW  
20 FT. ROADWAY  
SPANS 20' TO 50'

Steel 1" x 2"



091B00045N





**GENERAL NOTE**  
 SPECIFICATIONS: State Highway Department, Kentucky (1922 Standard with Amendments);  
 DESIGN (LOADS): Bridge designed for H-15 loading as specified in KASAS Specifications 1925;  
 CONCRETE: Class "D" concrete to be used throughout except in hand-laid reinforcement, which may be Class "C" concrete;  
 REINFORCEMENT: Reinforcement shall be steel reinforcement bars conforming to the specifications of the American Institute of Steel Construction, Inc. (AISC) Specification for Structural Steel Buildings, 1921 Edition, as amended;  
 C.I. DIMENSIONS: C.I. DIMENSIONS SHALL BE IN ACCORDANCE WITH THE SPECIFICATIONS FOR CAST-IRON PIPE AND FITTINGS, 1922 EDITION, AS AMENDED;  
 THE COST OF THESE ITEMS IS TO BE INCLUDED IN THE UNIT PRICE bid for Class "D" concrete;  
 EXPANSION PLATE: All plates to be Class "B" bronze, ASTM Specification B72-35-1, with sliding surface finely polished;  
 MACHINE BOLTS: Machine bolts to be furnished, but one not included in weight of plates given. Cost of bolts one to be included in unit price bid for plates. Plates are to be true to dimensions and sliding surfaces to be even and flat to give full bearing with no interference to sliding;  
 REMOVE EXISTING: The existing side curb barrier was destroyed by damage to the highway indicated and requires the best information available to the Department of Highways to be considered existing at the site of the work. They do not constitute a contract and the contractor shall make their own conclusions as to compliance with the Department of Highways does not give any guarantee as to the accuracy of data furnished or as to conditions which will actually be found to exist when the work is being executed.

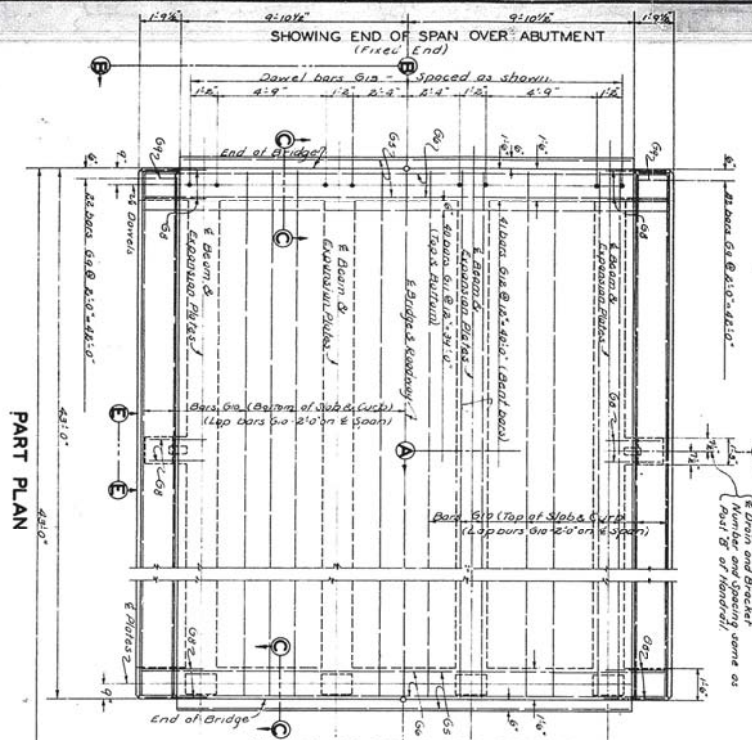
**TOTAL ESTIMATE OF QUANTITIES**

Concrete Class "D"	325 Cu. Yds.
Concrete Class "C"	160 Cu. Yds.
Reinforcement	39,900 Lbs.
Expansion Plates	510 Sq. Yds.
Structure Erection	510 Sq. Yds.

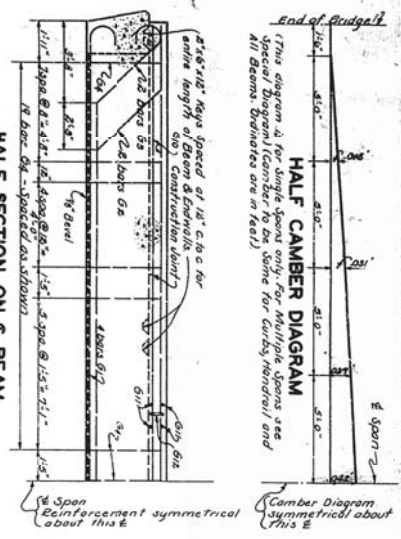
A-213  
 A-161  
 G-217  
 G-250  
 G-231  
 H-114

**COMMONWEALTH OF KENTUCKY**  
 DEPARTMENT OF HIGHWAYS  
 FRANKFORT  
 COUNTY OF ROWAN  
 MOREHEAD - VANCEBURG  
 ROAD PROJECT NO. 1700  
 STATION 37+83  
 103B0002 5N

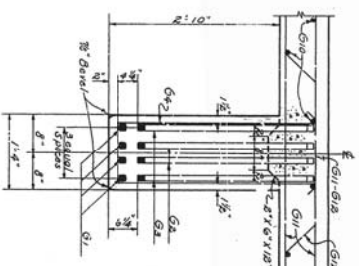
Final Check: *M. H. ...* 7-12-28  
 DESIGNED BY: *E. Vaughan* DATE: 8-2-28  
 CHECKED BY: *E. Vaughan* DATE: 8-2-28  
 REVISIONS: *Conductor Diagram* DATE: 8-2-28  
 REVISIONS: *...* DATE: 7-28



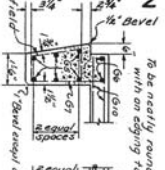
HALF SECTION ON G BEAM  
(Reinforcement same for all beams)



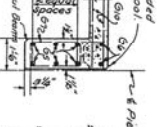
TYPICAL BEAM SECTION



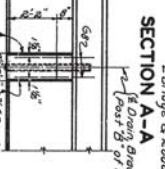
SECTION C-C



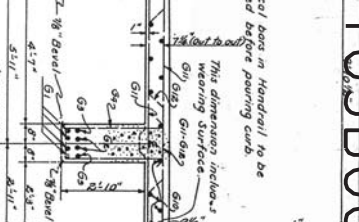
SECTION D-D



ELEVATION E-E



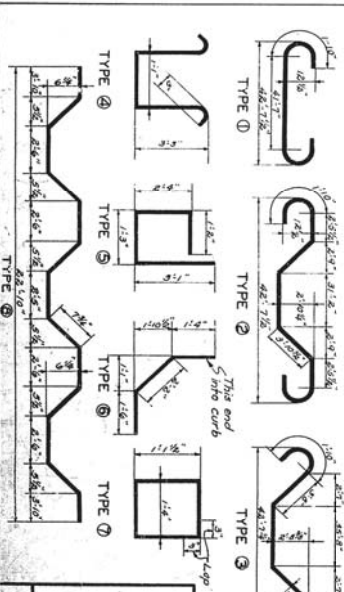
SECTION A-A



SECTION B-B



103B00023N



NO.	TYPE	NO. USED	LOCATION
G1	1	45	Beams
G2	2	47	Beams
G3	3	46	Beams
G4	4	7	End Walls
G5	5	1	End Walls
G6	6	10	Beams & End Walls
G7	7	4	Curbs
G8	8	4	Curbs & Slab
G9	9	4	Slab
G10	10	4	Slab
G11	11	4	Slab
G12	12	4	Slab

NO.	TYPE	NO. USED	LOCATION
G13	13	4	Beams - Fixed End

**GENERAL NOTE**  
 State Highway Department, Kentucky, 1928 Standard with subsequent adopted amendments.  
 Cast in concrete to be used through.  
 Steel Reinforcement - To be deformed bars dimension shown from the face of concrete as indicated on drawings. Dimensions shown for bar spacing are the distance between centers of bars. Position of bars in concrete shall be as shown on drawings. Position by means of precast mortar or concrete blocks supporting reinforcement shall be spaced not farther apart than 50 diameters.  
 Maximum Spacing - To be the same as for concrete.  
 Bent-up Bars - All bent-up bars to be bent with the requirements for same.  
 Reinforced Concrete - To be the same as for concrete.  
 Reinforced Expansion Joint - See Standard Drawing No. G-287 for details.  
 Cast of Reinforcing and Pacing to be included in price bid for concrete.  
 Car Iron Decks - For details of drains see Standard Drawing G-250.  
 The Plates - To be the same as for concrete.  
 Expansion Plates - For details of Expansion Plates see Standard Drawing G-250.

**COMMONWEALTH OF KENTUCKY**  
 STATE HIGHWAY DEPARTMENT  
**STANDARD CONCRETE BRIDGE**  
**DECK GIRDER STRAIGHT**  
**40 FT. SPAN 20 FT. ROW**

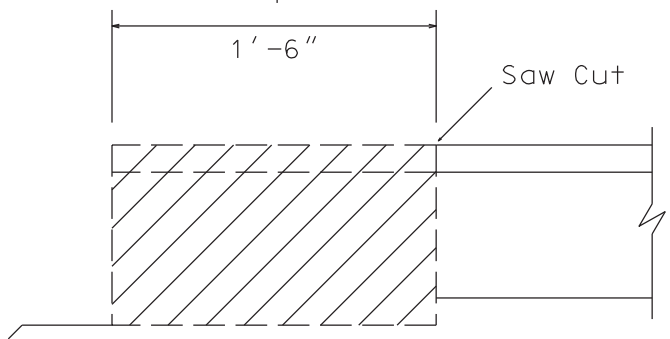
Note - Quantities are estimated for two intermediate diaphragms on each side of span.  
 ESTIMATE OF QUANTITIES  
 UNIT QUANTITY  
 YARD IN SINGLE  
 CUBIC YARD  
 SQUARE YARD  
 LINEAL FOOT  
 SQUARE FOOT  
 SQUARE INCH

Note - Over a Pier omit cratched portion of End wall.  
 This dimension includes wearing surface.

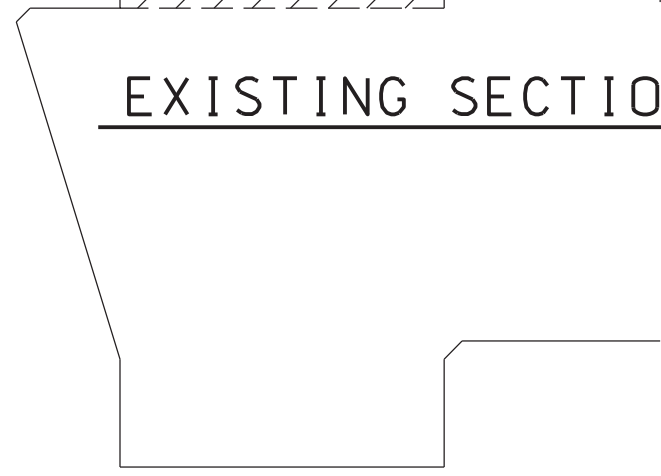
022B00063N  
032B00006N  
032B00007N  
035B00063N  
091B00045N  
103B00023N

# ARMORED EDGE DETAIL

Remove X-Hatched Areas of  
Concrete & Expansion Device

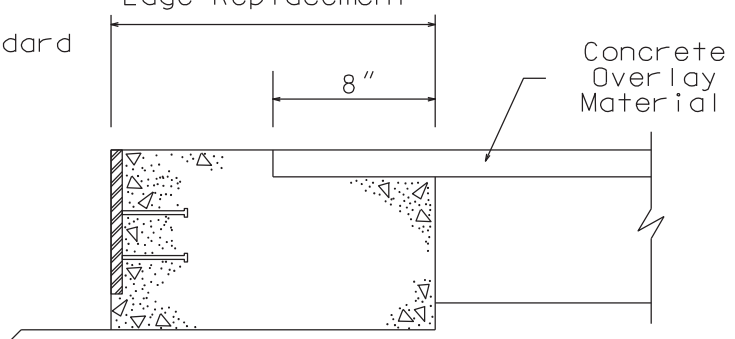


## EXISTING SECTION

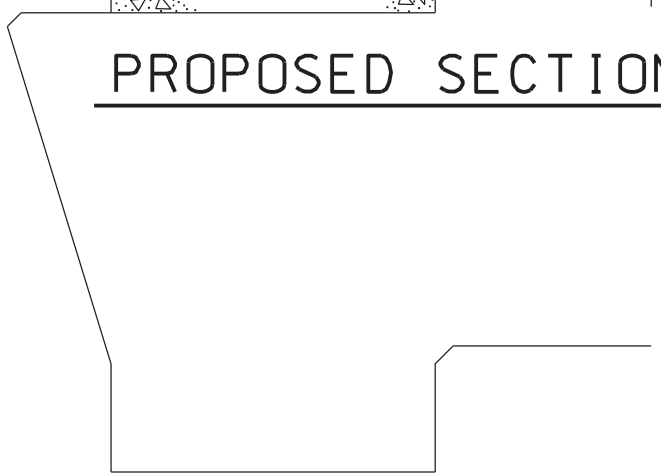


Pay Limits for "Armored  
Edge Replacement"

See Standard  
Drawing  
BJE-001



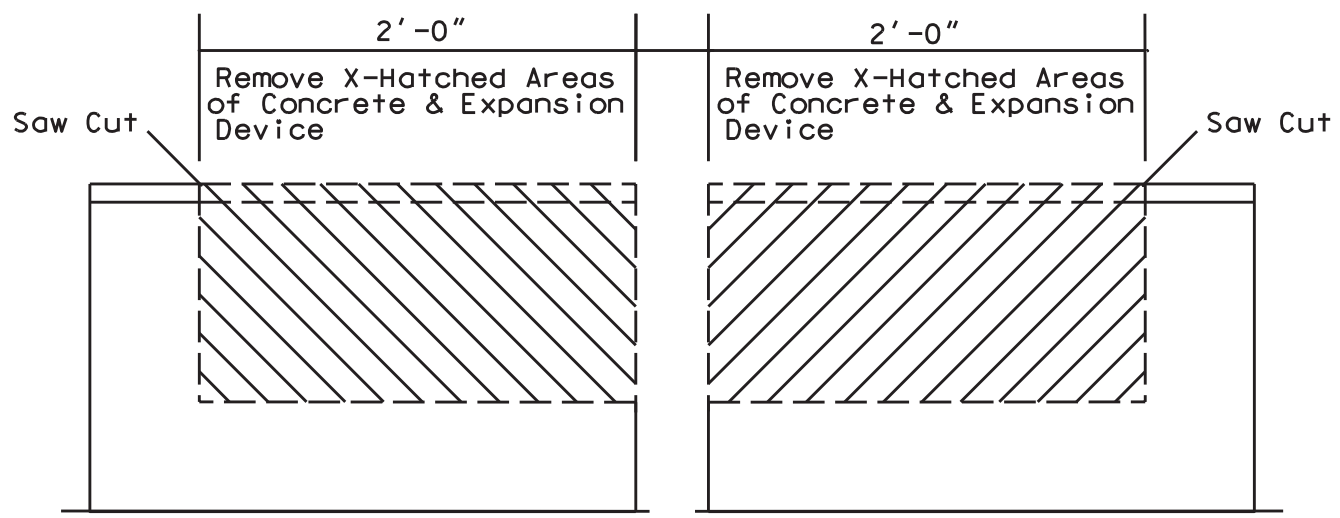
## PROPOSED SECTION



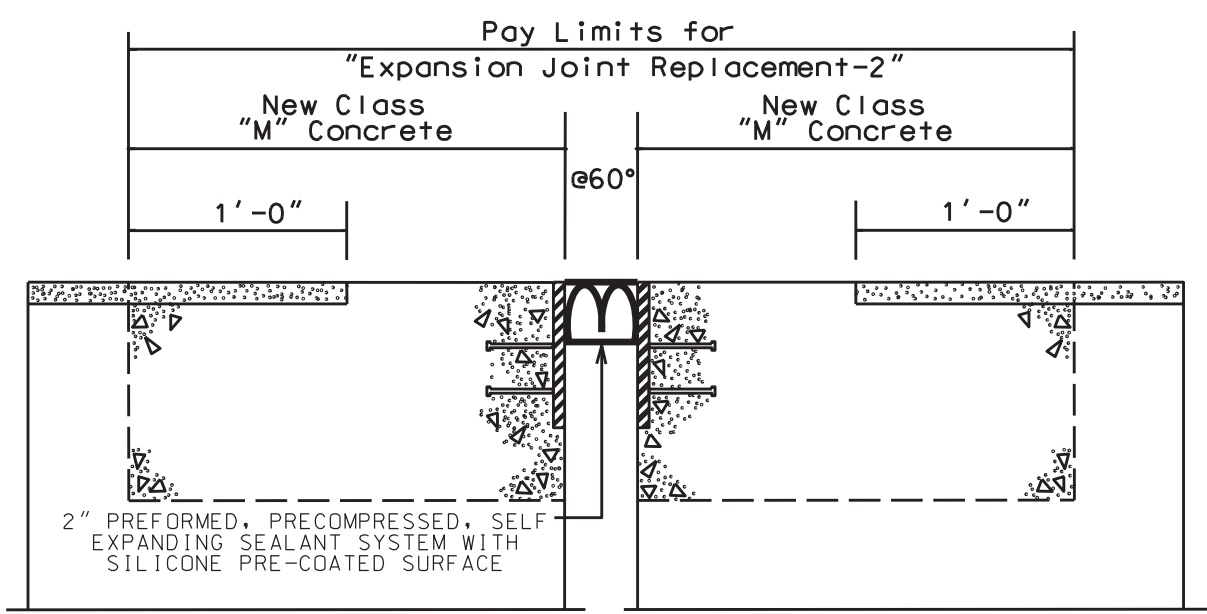
022B00063N

# EXPANSION DAM DETAIL

Expansion Joint Replacement-2"-30 degree skew



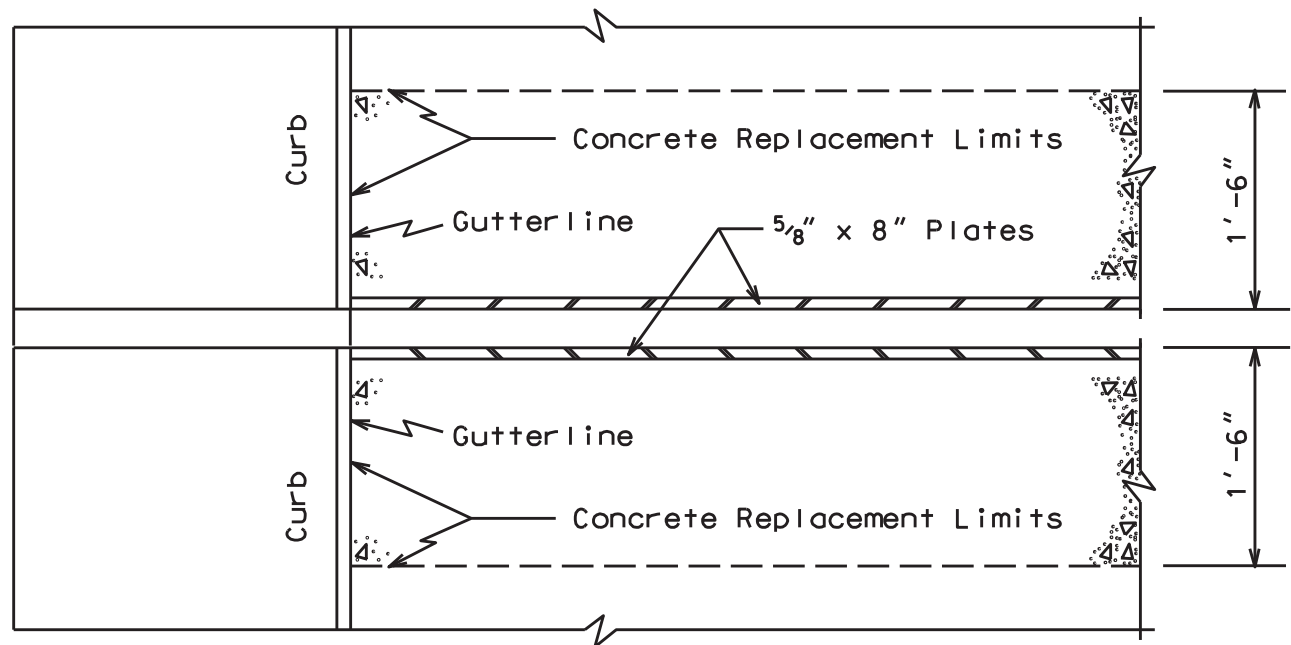
## EXISTING SECTION



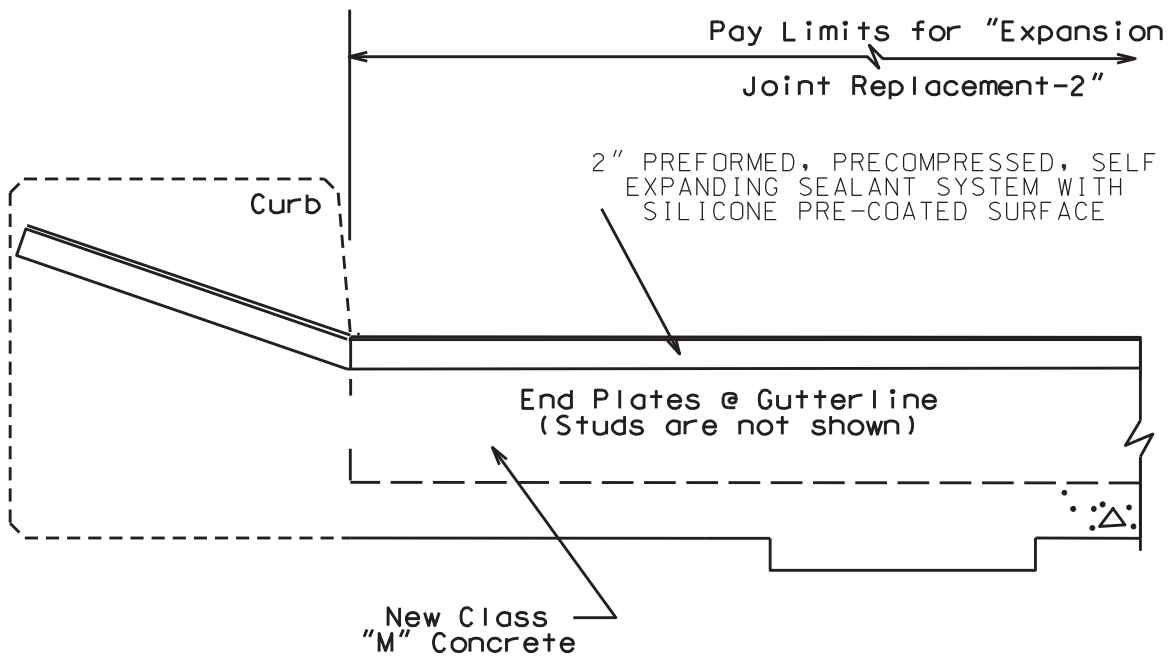
## PROPOSED SECTION

022B00063N

### CURB SECTION



### PLAN VIEW @ CURB

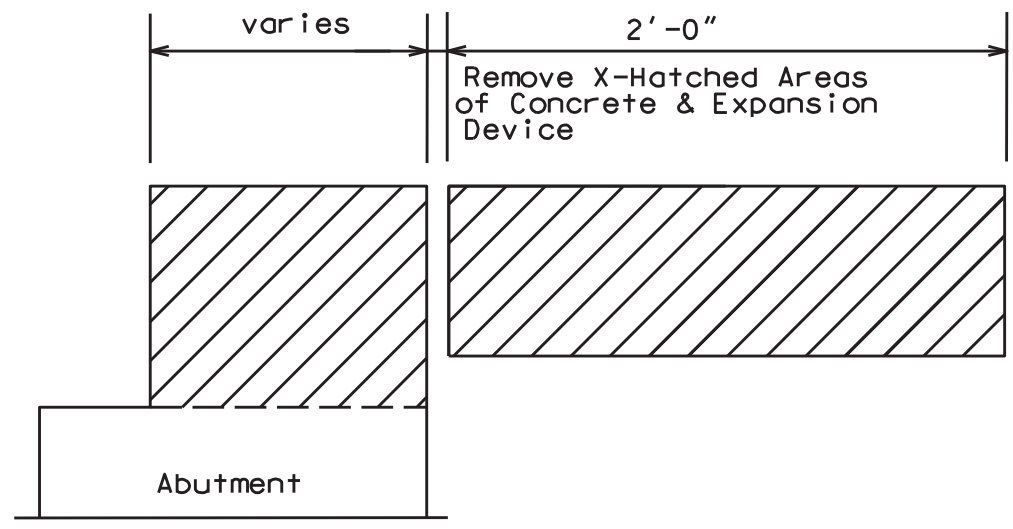


### PROPOSED SECTION @ CURB

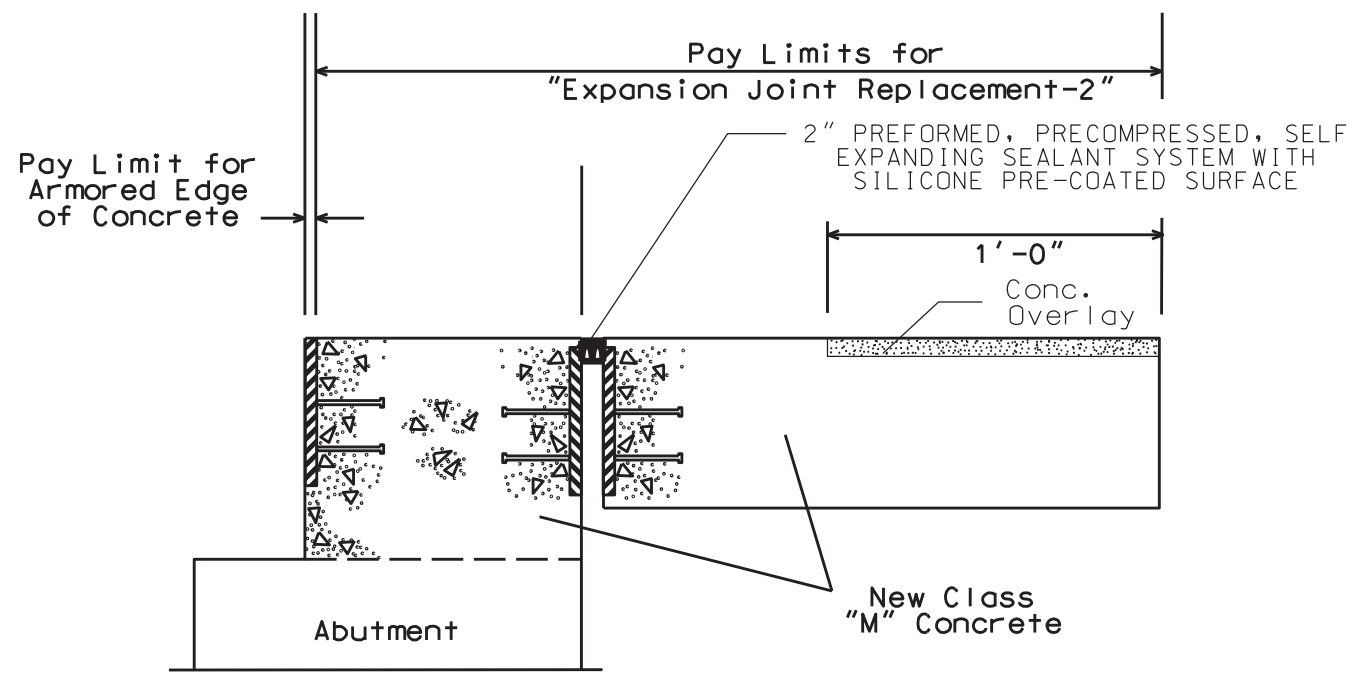
022B00017N

# EXPANSION DAM DETAIL

## Abutments #1 and #2



Clean & Leave  
Steel Reinf.  
in place.

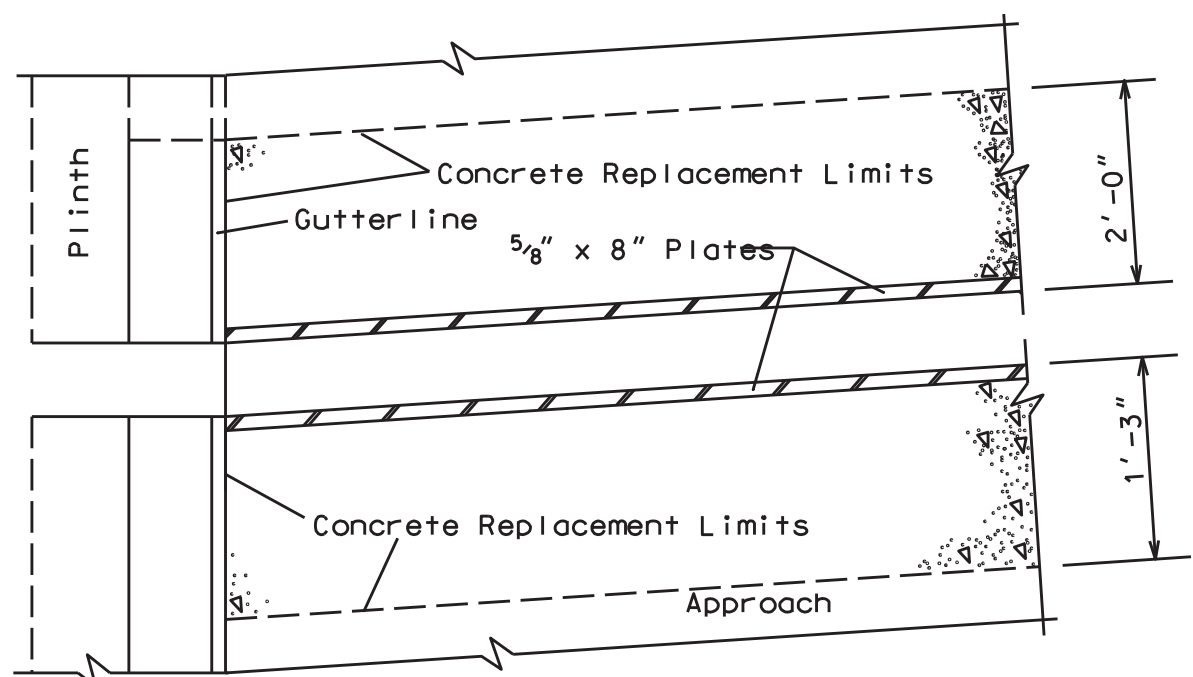


### PROPOSED SECTION

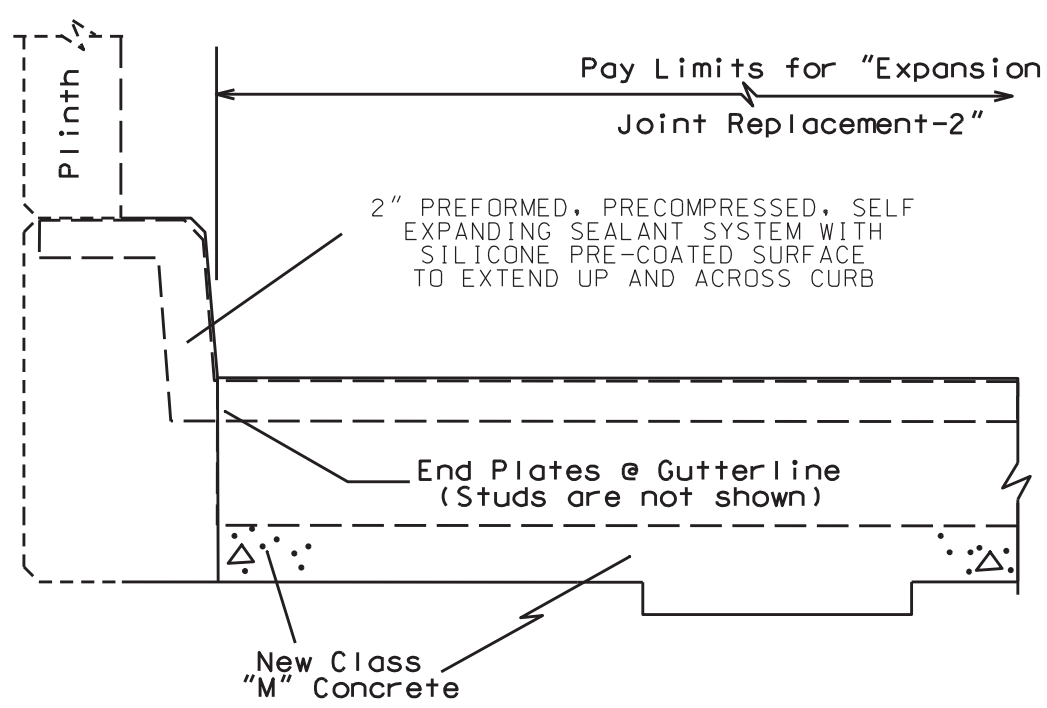
022B00017N

# CURB SECTION

Abutments #1 and #2



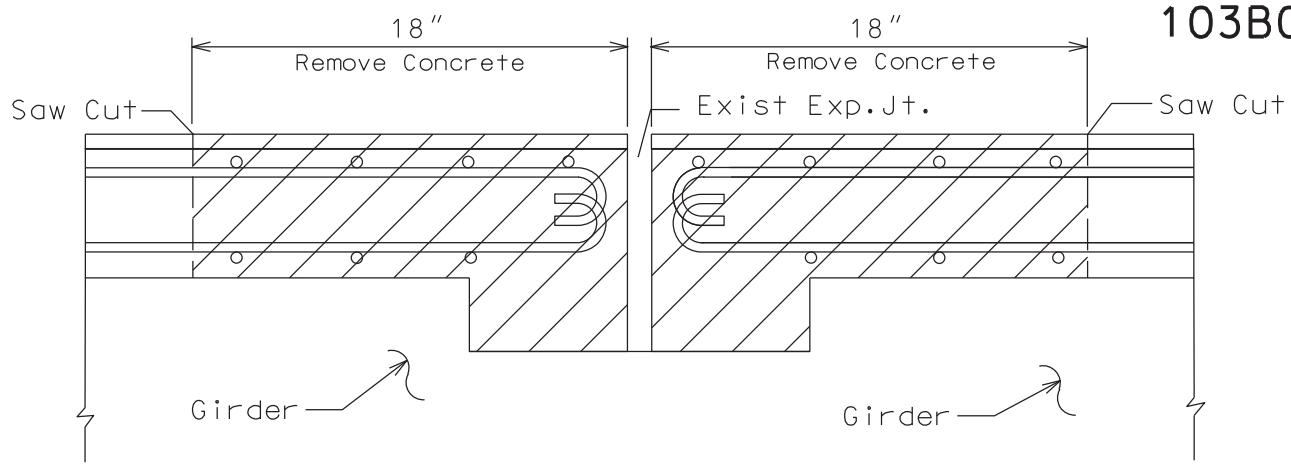
PLAN VIEW @ CURB



PROPOSED SECTION @ CURB

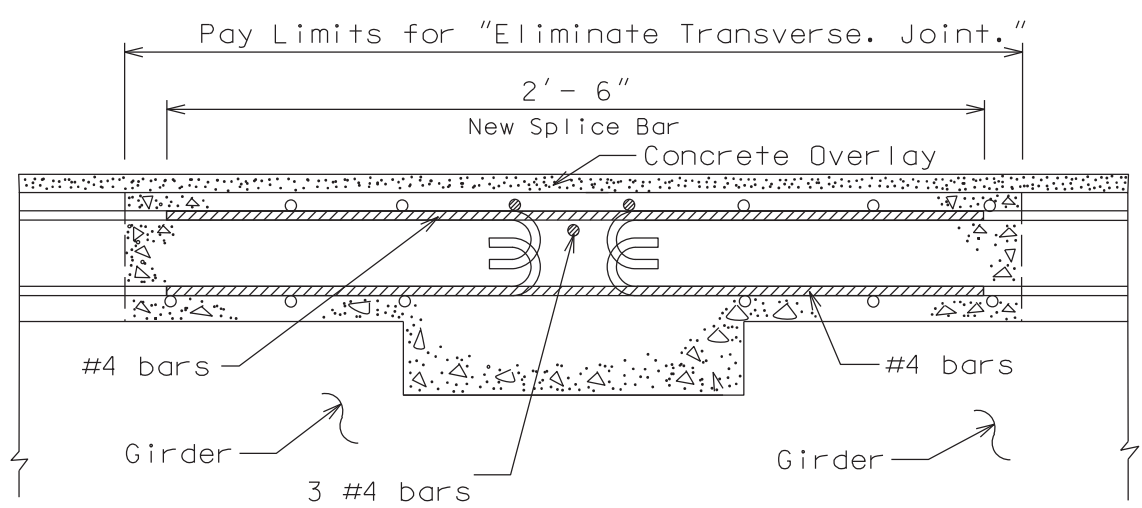
022B000063N  
032B000006N  
032B000007N  
035B000063N  
091B000045N  
103B000023N

# ELIMINATE TRANSVERSE JOINT DETAIL



NOTE: Do not disturb existing Steel Reinforcement

# EXISTING SECTION @ Transverse Joint

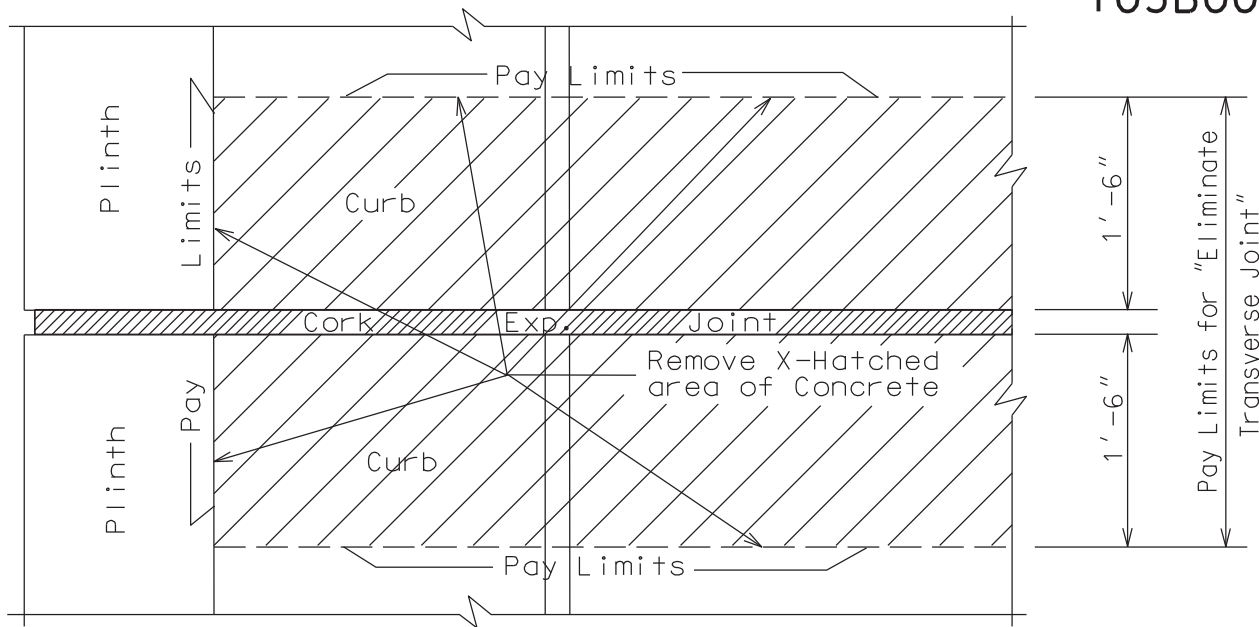


# PROPOSED SECTION @ Transverse Joint

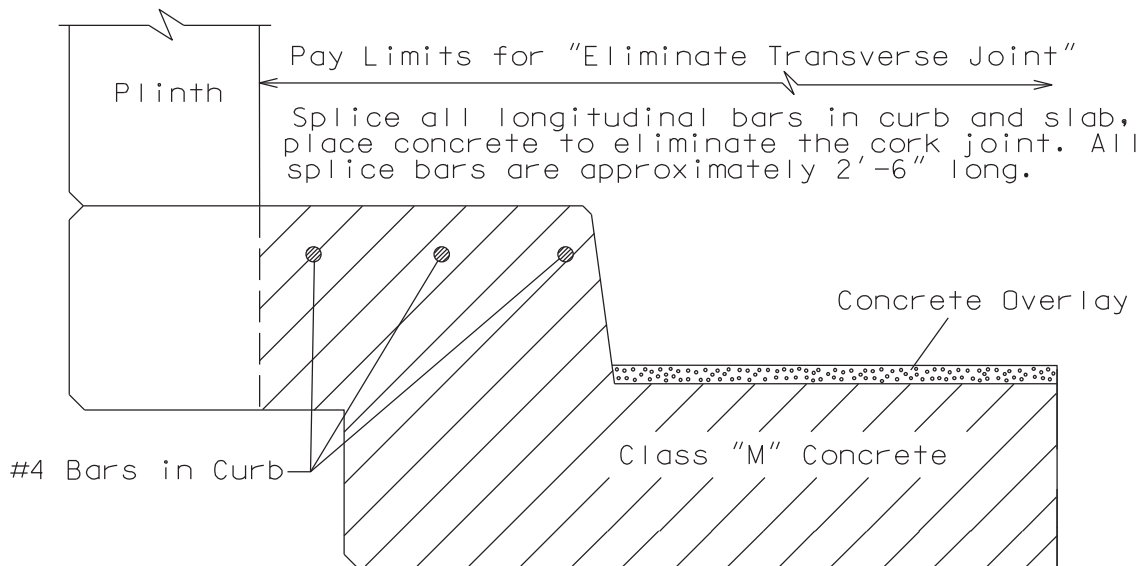


# ELIMINATE TRANSVERSE JOINT DETAIL

022B000063N  
032B000006N  
032B000007N  
035B000063N  
091B000045N  
103B000023N



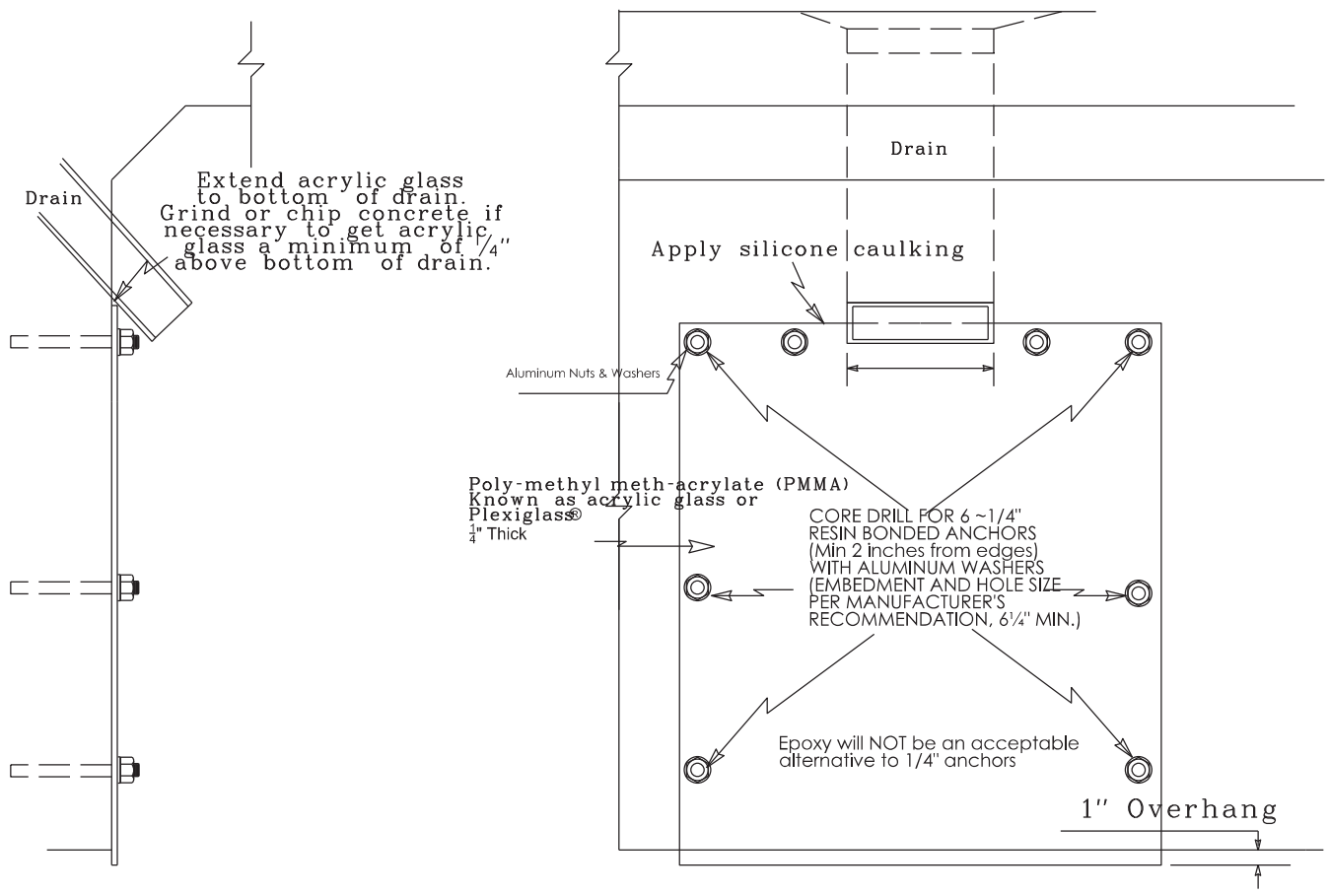
## EXISTING PLAN VIEW @ CURB



## PROPOSED SECTION @ CURB

035B00063N  
091B00045N

# ACRYLIC GLASS DETAIL



SECTION  
NOT TO SCALE

PLAN  
NOT TO SCALE

035B00063N	12 drains, 18"x 36" pieces = 54 sqft
091B00045N	18 drains, 30"x 36" pieces = 135 sqft

**PART II**  
**SPECIFICATIONS AND STANDARD DRAWINGS**

### **SPECIFICATIONS REFERENCE**

Any reference in the plans or proposal to previous editions of the *Standard Specifications for Road and Bridge Construction* and *Standard Drawings* are superseded by *Standard Specifications for Road and Bridge Construction, Edition of 2012* and *Standard Drawings, Edition of 2016*.

## **SUPPLEMENTAL SPECIFICATIONS**

The contractor shall use the Supplemental Specifications that are effective at the time of letting.  
The Supplemental Specifications can be found at the following link:

<http://transportation.ky.gov/Construction/Pages/Kentucky-Standard-Specifications.aspx>

## STANDARD DRAWINGS THAT APPLY

### TRAFFIC ~ *TEMPORARY* ~ TRAFFIC CONTROL

LANE CLOSURE USING TRAFFIC SIGNALS	TTC-110
LANE CLOSURE MULTI-LANE HIGHWAY CASE I	TTC-115

### DEVICES

POST SPLICING DETAIL	TTD-110
----------------------	---------

### BRIDGES

#### MISCELLANEOUS STANDARDS

BRIDGE RESTORATION AND WATERPROOFING WITH CONCRETE OVERLAYS	BGX-009-04
--	------------

### JOINTS

NEOPRENE EXPANSION DAMS AND ARMORED EDGES	BJE-001-11
---	------------

## **PART III**

### **EMPLOYMENT, WAGE AND RECORD REQUIREMENTS**

**TRANSPORTATION CABINET  
DEPARTMENT OF HIGHWAYS**

**LABOR AND WAGE REQUIREMENTS  
APPLICABLE TO OTHER THAN FEDERAL-AID SYSTEM PROJECTS**

- I. Application
- II. Nondiscrimination of Employees (KRS 344)

**I. APPLICATION**

1. These contract provisions shall apply to all work performed on the contract by the contractor with his own organization and with the assistance of workmen under his immediate superintendence and to all work performed on the contract by piecework, station work or by subcontract. The contractor's organization shall be construed to include only workmen employed and paid directly by the contractor and equipment owned or rented by him, with or without operators.

2. The contractor shall insert in each of his subcontracts all of the stipulations contained in these Required Provisions and such other stipulations as may be required.

3. A breach of any of the stipulations contained in these Required Provisions may be grounds for termination of the contract.

3. If the contractor is in control of apprenticeship or other training or retraining, including on-the-job training programs, he shall not discriminate against an individual because of his race, color, religion, national origin, sex, disability or age forty (40) and over, in admission to, or employment in any program established to provide apprenticeship or other training.

4. The contractor will send to each labor union or representative of workers with which he has a collective bargaining agreement or other contract or understanding, a notice to be provided advising the said labor union or workers' representative of the contractor's commitments under this section, and shall post copies of the notice in conspicuous places available to employees and applicants for employment. The contractor will take such action with respect to any subcontract or purchase order as the administrating agency may direct as a means of enforcing such provisions, including sanctions for non-compliance.

Revised: January 25, 2017

**II. NONDISCRIMINATION OF EMPLOYEES**

**AN ACT OF THE KENTUCKY  
GENERAL ASSEMBLY TO PREVENT  
DISCRIMINATION IN EMPLOYMENT  
KRS CHAPTER 344  
EFFECTIVE JUNE 16, 1972**

The contract on this project, in accordance with KRS Chapter 344, provides that during the performance of this contract, the contractor agrees as follows:

1. The contractor shall not fail or refuse to hire, or shall not discharge any individual, or otherwise discriminate against an individual with respect to his compensation, terms, conditions, or privileges of employment, because of such individual's race, color, religion, national origin, sex, disability or age (forty and above); or limit, segregate, or classify his employees in any way which would deprive or tend to deprive an individual of employment opportunities or otherwise adversely affect his status as an employee, because of such individual's race, color, religion, national origin, sex, disability or age forty (40) and over. The contractor agrees to post in conspicuous places, available to employees and applicants for employment, notices to be provided setting forth the provisions of this nondiscrimination clause.

2. The contractor shall not print or publish or cause to be printed or published a notice or advertisement relating to employment by such an employer or membership in or any classification or referral for employment by the employment agency, indicating any preference, limitation, specification, or discrimination, based on race, color, religion, national origin, sex, or age forty (40) and over, or because the person is a qualified individual with a disability, except that such a notice or advertisement may indicate a preference, limitation, or specification based on religion, national origin, sex, or age forty (40) and over, or because the person is a qualified individual with a disability, when religion, national origin, sex, or age forty (40) and over, or because the person is a qualified individual with a disability, is a bona fide occupational qualification for employment.



## EXECUTIVE BRANCH CODE OF ETHICS

In the 1992 regular legislative session, the General Assembly passed and Governor Brereton Jones signed Senate Bill 63 (codified as KRS 11A), the Executive Branch Code of Ethics, which states, in part:

KRS 11A.040 (7) provides:

No present or former public servant shall, within six (6) months following termination of his office or employment, accept employment, compensation, or other economic benefit from any person or business that contracts or does business with, or is regulated by, the state in matters in which he was directly involved during the last thirty-six (36) months of his tenure. This provision shall not prohibit an individual from returning to the same business, firm, occupation, or profession in which he was involved prior to taking office or beginning his term of employment, or for which he received, prior to his state employment, a professional degree or license, provided that, for a period of six (6) months, he personally refrains from working on any matter in which he was directly involved during the last thirty-six (36) months of his tenure in state government. This subsection shall not prohibit the performance of ministerial functions, including but not limited to filing tax returns, filing applications for permits or licenses, or filing incorporation papers, nor shall it prohibit the former officer or public servant from receiving public funds disbursed through entitlement programs.

KRS 11A.040 (9) states:

A former public servant shall not represent a person or business before a state agency in a matter in which the former public servant was directly involved during the last thirty-six (36) months of his tenure, for a period of one (1) year after the latter of:

- a) The date of leaving office or termination of employment; or
- b) The date the term of office expires to which the public servant was elected.

This law is intended to promote public confidence in the integrity of state government and to declare as public policy the idea that state employees should view their work as a public trust and not as a way to obtain private benefits.

If you have worked for the executive branch of state government within the past six months, you may be subject to the law's prohibitions. The law's applicability may be different if you hold elected office or are contemplating representation of another before a state agency.

Also, if you are affiliated with a firm which does business with the state and which employs former state executive-branch employees, you should be aware that the law may apply to them.

In case of doubt, the law permits you to request an advisory opinion from the Executive Branch Ethics Commission, 3 Fountain Place, Frankfort, Kentucky 40601; telephone (502) 564-7954.

Revised: January 27, 2017

### **Kentucky Equal Employment Opportunity Act of 1978**

The requirements of the Kentucky Equal Employment Opportunity Act of 1978 (KRS 45.560-45.640) shall apply to this Contract. The apparent low Bidder will be required to submit EEO forms to the Division of Construction Procurement, which will then forward to the Finance and Administration Cabinet for review and approval. No award will become effective until all forms are submitted and EEO/CC has certified compliance. The required EEO forms are as follows:

- EEO-1: Employer Information Report
- Affidavit of Intent to Comply
- Employee Data Sheet
- Subcontractor Report

These forms are available on the Finance and Administration's web page under ***Vendor Information, Standard Attachments and General Terms*** at the following address:  
**<https://www.eProcurement.ky.gov>**.

Bidders currently certified as being in compliance by the Finance and Administration Cabinet may submit a copy of their approval letter in lieu of the referenced EEO forms.

For questions or assistance please contact the Finance and Administration Cabinet by email at **[finance.contractcompliance@ky.gov](mailto:finance.contractcompliance@ky.gov)** or by phone at 502-564-2874.

# EMPLOYEE RIGHTS UNDER THE FAIR LABOR STANDARDS ACT

THE UNITED STATES DEPARTMENT OF LABOR WAGE AND HOUR DIVISION

## FEDERAL MINIMUM WAGE

# \$7.25

 PER HOUR

BEGINNING JULY 24, 2009

**OVERTIME PAY** At least 1½ times your regular rate of pay for all hours worked over 40 in a workweek.

**CHILD LABOR** An employee must be at least **16** years old to work in most non-farm jobs and at least **18** to work in non-farm jobs declared hazardous by the Secretary of Labor.

Youths **14** and **15** years old may work outside school hours in various non-manufacturing, non-mining, non-hazardous jobs under the following conditions:

**No more than**

- **3** hours on a school day or **18** hours in a school week;
- **8** hours on a non-school day or **40** hours in a non-school week.

Also, work may not begin before **7 a.m.** or end after **7 p.m.**, except from June 1 through Labor Day, when evening hours are extended to **9 p.m.** Different rules apply in agricultural employment.

**TIP CREDIT** Employers of “tipped employees” must pay a cash wage of at least \$2.13 per hour if they claim a tip credit against their minimum wage obligation. If an employee's tips combined with the employer's cash wage of at least \$2.13 per hour do not equal the minimum hourly wage, the employer must make up the difference. Certain other conditions must also be met.

**ENFORCEMENT** The Department of Labor may recover back wages either administratively or through court action, for the employees that have been underpaid in violation of the law. Violations may result in civil or criminal action.

Employers may be assessed civil money penalties of up to \$1,100 for each willful or repeated violation of the minimum wage or overtime pay provisions of the law and up to \$11,000 for each employee who is the subject of a violation of the Act's child labor provisions. In addition, a civil money penalty of up to \$50,000 may be assessed for each child labor violation that causes the death or serious injury of any minor employee, and such assessments may be doubled, up to \$100,000, when the violations are determined to be willful or repeated. The law also prohibits discriminating against or discharging workers who file a complaint or participate in any proceeding under the Act.

**ADDITIONAL INFORMATION**

- Certain occupations and establishments are exempt from the minimum wage and/or overtime pay provisions.
- Special provisions apply to workers in American Samoa and the Commonwealth of the Northern Mariana Islands.
- Some state laws provide greater employee protections; employers must comply with both.
- The law requires employers to display this poster where employees can readily see it.
- Employees under 20 years of age may be paid \$4.25 per hour during their first 90 consecutive calendar days of employment with an employer.
- Certain full-time students, student learners, apprentices, and workers with disabilities may be paid less than the minimum wage under special certificates issued by the Department of Labor.

For additional information:



# 1-866-4-USWAGE

(1-866-487-9243)

TTY: 1-877-889-5627



# WWW.WAGEHOUR.DOL.GOV

U.S. Department of Labor | Wage and Hour Division

**PART IV**  
**INSURANCE**

## INSURANCE

The Contractor shall procure and maintain the following insurance in addition to the insurance required by law:

- 1) Commercial General Liability-Occurrence form – not less than \$2,000,000 General aggregate, \$2,000,000 Products & Completed Aggregate, \$1,000,000 Personal & Advertising, \$1,000,000 each occurrence.
- 2) Automobile Liability- \$1,000,000 per accident
- 3) Employers Liability:
  - a) \$100,000 Each Accident Bodily Injury
  - b) \$500,000 Policy limit Bodily Injury by Disease
  - c) \$100,000 Each Employee Bodily Injury by Disease
- 4) The insurance required above must be evidenced by a Certificate of Insurance and this Certificate of Insurance must contain one of the following statements:
  - a) "policy contains no deductible clauses."
  - b) "policy contains \_\_\_\_\_ (amount) deductible property damage clause but company will pay claim and collect the deductible from the insured."
- 5) KENTUCKY WORKMEN'S COMPENSATION INSURANCE. The contractor shall furnish evidence of coverage of all his employees or give evidence of self-insurance by submitting a copy of a certificate issued by the Workmen's Compensation Board.

The cost of insurance is incidental to all contract items. All subcontractors must meet the same minimum insurance requirements.

**PART V**  
**BID ITEMS**

**PROPOSAL BID ITEMS**

REVISED ADDENDUM #1: 11-27-17

172918

Page 1 of 1

Report Date 11/27/17

**Section: 0001 - BRIDGE**

LINE	BID CODE	ALT	DESCRIPTION	QUANTITY	UNIT	UNIT PRIC	FP	AMOUNT
0010	02562		TEMPORARY SIGNS	1,043.00	SQFT		\$	
0020	02650		MAINTAIN & CONTROL TRAFFIC APPLIES TO 022B00017N	1.00	LS		\$	
0030	02650		MAINTAIN & CONTROL TRAFFIC APPLIES TO 022B00063N (ADDED: 11-27-17)	1.00	LS		\$	
0040	02650		MAINTAIN & CONTROL TRAFFIC APPLIES TO 032B00006N	1.00	LS		\$	
0050	02650		MAINTAIN & CONTROL TRAFFIC APPLIES TO 032B00007N	1.00	LS		\$	
0060	02650		MAINTAIN & CONTROL TRAFFIC APPLIES TO 035B00063N (ADDED: 11-27-17)	1.00	LS		\$	
0070	02650		MAINTAIN & CONTROL TRAFFIC APPLIES TO 091B00045N	1.00	LS		\$	
0080	02650		MAINTAIN & CONTROL TRAFFIC APPLIES TO 103B00023N	1.00	LS		\$	
0090	02653		LANE CLOSURE	14.00	EACH		\$	
0100	03295		EXPAN JOINT REPLACE 2 IN	92.00	LF		\$	
0110	03299		ARMORED EDGE FOR CONCRETE	399.90	LF		\$	
0120	03300		ELIMINATE TRANSVERSE JOINT	315.60	LF		\$	
0130	03302		REPAIR CONCRETE CURB	120.00	LF		\$	
0140	03304		BRIDGE OVERLAY APPROACH PAVEMENT	2,743.00	SQYD		\$	
0150	04933		TEMP SIGNAL 2 PHASE	5.00	EACH		\$	
0160	04934		TEMP SIGNAL MULTI PHASE	2.00	EACH		\$	
0170	06514		PAVE STRIPING-PERM PAINT-4 IN	6,740.00	LF		\$	
0180	06549		PAVE STRIPING-TEMP REM TAPE-B	3,500.00	LF		\$	
0190	06550		PAVE STRIPING-TEMP REM TAPE-W	7,000.00	LF		\$	
0200	06551		PAVE STRIPING-TEMP REM TAPE-Y	14,000.00	LF		\$	
0210	08150		STEEL REINFORCEMENT	5,177.00	LB		\$	
0220	08504		EPOXY SAND SLURRY	892.40	SQYD		\$	
0230	08510		REM EPOXY BIT FOREIGN OVERLAY	2,160.00	SQYD		\$	
0240	08510		REM EPOXY BIT FOREIGN OVERLAY EXISTING ASPHALT OVERLAY VARIES BETWEEN 6" - 12"	340.00	SQYD		\$	
0250	08526		CONC CLASS M FULL DEPTH PATCH	58.00	CUYD		\$	
0260	08534		CONCRETE OVERLAY-LATEX	116.90	CUYD		\$	
0270	08549		BLAST CLEANING	3,697.00	SQYD		\$	
0280	08551		MACHINE PREP OF SLAB	304.00	SQYD		\$	
0290	22146EN		CONCRETE PATCHING REPAIR	20.00	SQFT		\$	
0300	23879EC		ACRYLIC GLASS	189.00	SQFT		\$	
0310	24094EC		PARTIAL DEPTH PATCHING	77.70	CUYD		\$	

**Section: 0002 - DEMOBILIZATION**

LINE	BID CODE	ALT	DESCRIPTION	QUANTITY	UNIT	UNIT PRIC	FP	AMOUNT
0320	02569		DEMOBILIZATION	1.00	LS		\$	